



2021년 교육부지정
'교육국제화역량 인증제(IEQAS)
우수인증기관

2022~2023년 교육부지정
'교육국제화역량 인증제(IEQAS)
인증기관

2024학년도 전기 1차 외국인 신·편입학 특별전형 모집요강

2024学年度春季 外国人特别招生 新·插班生招生简章

2024 Spring Semester Admission Guide for International Students





Globalize the local
Localize the global

Table of Content

| | |
|-----------------------------------|--------|
| 대학교 소개 大学简介 · University Brief | ... 04 |
| 입학 안내 (국문) | ... 16 |
| 入学指南 (中文) | ... 38 |
| Admission Guidelines (ENG) | ... 60 |
| 캠퍼스 맵 校园地图 · Campus Map | ... 82 |





FACTS BY THE NUMBERS



1st four-year Private University in Korea since its Independence
韩国解放后设立的第一所私立大学



2nd in Support for Start-ups and Career Development
创业扶持领域位居第二位



62 Research centers on Campus
62个校园研究中心



80% of International Students enjoy Scholarship
80%的国际学生享受奖学金



380+ Partner Universities around the World
380余所姐妹院校遍布世界各地



1,663 International Students
1,663名外国留学生



38,319 Current Students
38,319名在校生



210,000 Alumni
210,000名校友

As of October 2019



Dankook University received IEQAS (International Education Quality Assurance System) certification from the Ministry of Education, Korea for 9 consecutive years since 2015.
檀国大学自2015年以来连续八年获得韩国教育部的国际教育质量保证体系认证

4차 산업혁명 혁신선도대학

Leading Innovative University in the 4th Industrial Revolution
第四次工业革命中的领先创新大学

40 억 원 투입
USD 3.8M investment
投入40亿韩币

※4D

Digital tooling

디지털도구 활용능력 · 数字工具利用能力

Dual linking

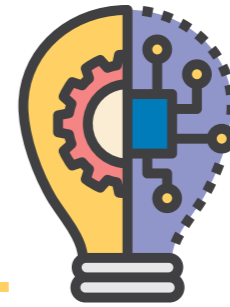
하드웨어-소프트웨어 융합능력 · 硬件软件融合能力

Design thinking

디자인싱킹능력 · 设计思维能力

Decision finding

의사결정능력 · 决策能力



소프트웨어 중심대학

Software-oriented university
面向软件的学科

110 억 원 투입
USD 10M investment
投入110亿韩币

※ 인문 · 자연 · 사회 · 공학 · 예술 각 분야에 적합한 SW기초 교육 실시

Conducting grounding software education compatible for Humanities, Science, Social Science, Engineering and Arts area
进行与人文、科学、社会科学、工程和艺术领域兼容的基础软件教育

※ 글로벌 IT기업과 취업연계형 인턴십 실시

Internship opportunity in the Global IT companies
全球IT公司的实习机会

※ 스탠포드대 · 오레곤주립대 · 싱가포르 SUTD 등과 교류

Joint SW project with Stanford university (US), Oregon State University (US), Singapore SUTD
与斯坦福大学(Stanford University), 俄勒冈州立大学(Oregon State University), 新加坡科技设计大学(SUTD)进行交流

산학협력 선도대학

Leading University in Industry-Academia Cooperation
产学合作先导大学

NO.1 산학협력 평가
产学合作评价
전국 최고 대학
全国首屈一指

※산학협력 주요 성과

Highest score in the leading Universities in Industry-Academia Partnership evaluations for five consecutive years.

连续五年在业界领先的大学-学术界合作伙伴评估中得分最高。

HUMART UNIVERSITY

※HUMAN+sMART
人工智能大学

196 억 원 투입
USD 18M investment
投入196亿韩币

※ 4차 산업혁명 관련 기술 활용한 학사시스템 운영

Implementation of an academic system that integrates skills related to the 4th Industrial Revolution

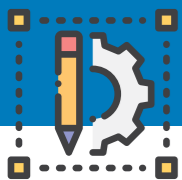
运营使用第四次产业革命相关技术的教务系统

- 클라우드, 빅데이터, 블록체인 등 첨단 ICT 기술 활용
- MOOC(공개강좌), 플립러닝 등 온라인 교과목으로 집단지성 학습체계 구축

※ 융합연구 - 산학협력 혁신 컨트롤 타워 단국미래융합연구원 설립

DKU Future-Convergence Research Center as a control tower of research on S-convergence and Industry-Academia Cooperation

融合研究-产学协力革新控制中心, 檀国未来融合研究院成立



WHY DKU?

국제화 지원센터



International Support Center
Counselling & Mentoring
国际支援中心

학습 지원



1:1 Korean Language
& Academic Tutoring
1:1 韩语和专业课程辅导

유학생 친환경 캠퍼스



International student friendly learning
environment
留学生友好型学习环境

글로벌 교육 커리큘럼 및 최고의 교육 인프라



Global Standard Advanced Curriculum &
Outstanding Educational Infrastructure
国际标准的课程安排及最高水平的教育环境

유학생 장학금

Scholarship for International Students · 留学生奖学金制度

DKU scholarship for English track students 50~100%
檀国大学英语进修生奖学金50~100%

Free On-Campus accommodation for UG students (Korean track only)
本科生校内住宿免费 (仅韩语进修生)

DKU International Scholarship Program (merit based tuition waiver 25% ~ 100%)
檀国大学国际奖学金项目 (学费减免制25%~100%)

TOPIK Scholarship
TOPIK 奖学金

Scholarship for on-campus interns
校内实习奖学金

DKU Global Scholarship
檀国大学全球奖学金

GEC Global Education Center

외국인 유학생의 학습 역량을 강화하여 학업 중도 포기 예방
提高外国留学生的学习能力, 预防中途放弃学业
Strengthens learning for international students to improve
academic persistence

K-LEAP 교육과정을 통한 한국어 구사능력 향상 通过 K-LEAP 课程提高韩语能力 Improving Korean language proficiency through the K-LEAP curriculum

1학기에 K-LEAP 7과목(18학점) 수강
第一个学期集中修习K-LEAP课程(7门/18个学分)
Taking 7 K-LEAP classes(18credits)
for the 1st semester

2학기에 K-LEAP 3과목(7학점) 수강
第二个学期修习3门K-LEAP课程(7个学分)
Taking 3 K-LEAP classes(7credits)
for the 2nd semester

K-LEAP 10과목 수강 시 교양교육과정,
웅비교육과정 대체이수가능
修习10门K-LEAP课程后,可代替教养课
或雄鹰教育课
Completion of Liberal arts and Woongbi
curriculum with taking 10 K-LEAP classes

1 학년 수료 시 TOPIK 4 급 이상 취득 목표
目标是大一结课时, 能取得 TOPIK 4 级以上
Goal for obtaining TOPIK 4(or higher)
on completing the first year

유학생 관리 PD 교수제 운영 运营留学生管理 PD 教授制度 Assigns global PD professors to manage international students

- 유학생을 위한 글로벌 PD교수 및 조교 조직 개설·운영
安排外国PD教授和助教等人员为留学生提供服务
- Organization comprised of global PD professors
and teaching assistants to support international
students

- 전공 및 학생의 Career Path를 고려하여 학부(과),
대학, 계열에 PD교수 배치
- 考虑专业和学生的职业路径设计(Career Path),
在院系设PD教授
- Global PD professors are assigned to academic
departments, colleges, and academic fields
taking into account student majors and
career paths

- 출결상황 및 시험분석 등 구체적 데이터 기반의
상담체계 확립
- 基于出勤情况和考试结果分析等具体的数据,
提供学业咨询
- Building a counseling system based on specific
data such as attendance and analysis of exams

- 학생능력 개선을 위한 학습법, 향후 Career를 위한
전공교과목 선택 등 유학생 개인에 맞는 상담 제공
- 针对学生的不同情况,提供学习方法,以及根据职
业路径设计进行选课方面的咨询
- Offers personalized counseling to international
students on

Roadmap

Monitoring 및 Feedback 을 통한 지속적 개선
通过跟踪和反馈来实现持续改善
Making continuous improvements through
monitoring and feedback

교수 - 유학생 Matching
教授和留学生结对
Matching between professors and
international students

Meeting 을 통한 문제점 파악
开会来寻找问题所在
Identify issues through meeting

Solution 도출
得出解决方案
Outline solutions

4차 산업혁명의 요람

Home of the 4th Industrial Revolution

In 2016, the computer program AlphaGo surprised the whole world when defeating a professional human Go player.

The 4th Industrial Revolution -represented by the introduction of Big Data, Cloud, AI, etc.- has already started.

In a new era, new talent is necessary; and the start of it is a renewed education.

The Strategy of Dankook University, Jukjeon Campus, characterized by the application of IT, will make you the leader of the Fourth Industrial Revolution.

第四次产业革命的摇篮

2016年人工智能围棋项目AlphaGo的登场让全世界惊诧万分。

以大数据、云应用、人工智能等为代表宣告第四次产业革命已经拉开序幕。

新时代需要新型人才。

那就要从新式教育出发。

檀国大学竹田校区推进的IT特性化战略会让各位成为第四次产业革命的主角。

2016년 인공지능 바둑 프로그램 알파고 (AlphaGo)의 등장은 전 세계를 깜짝 놀라게 만들었습니다.

빅데이터, 클라우드, 인공지능 등으로 대변되는

4차 산업혁명이 시작됐다는 것을 알려주었지요.

새로운 시대에는 새로운 인재가 필요합니다.

그리고 그 출발은 새로운 교육입니다.

단국대학교 죽전캠퍼스가 추진하는 IT특성화 전략은 여러분을 4차 산업혁명의 주역으로 만들어 줄 것입니다.



정부 재정지원 사업 약 150억 원 투입

Investment of approx. KRW15Billion on Government Financial Support Projects
政府财政支援产业投入约150亿韩元

신입생 '창의적 사고와 코딩' 필수 수강

Mandatory course of "Creative Thinking and Coding" for freshmen
新生上《创意性思考与编程》必修课

판교 - 죽전캠퍼스 - 광교 'IT 밸리' 형성

Development of the Pangyo - Jukjeon Campus - Gwanggyo 'IT Valley'
将板桥-竹田校区-光教连接形成"IT科技谷"

판교 글로벌창업혁신센터

Pangyo Global Start-up Innovation Center
板桥全球创业创新中心

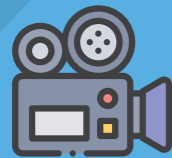
웨어러블Thinking센터

Wearable Thinking Center
可穿戴性思维中心

자율형블록체인융합연구소

Autonomous Blockchain Convergence Laboratory
自律型区块链融合研究所





**Traditional and Modern Culture Coexisting;
a New Korean Wave starts.**

In Dankook University, while keeping the traditional humanistic values of literature, history, and philosophy, we have achieved convergence with modern technology.

Under the values of "culture competitiveness," we have been intensively fostering and focusing on academic units leading the New Hallyu Culture.

**Humanities and Social Sciences,
Performing Film/Dance/Music/Design, and more.
DKU covers all fields of art to achieve.**

传统与现代文化共存, 新韩流即将开始

檀国大学在维护文学、史学及哲学等传统人文学价值的同时, 成功实现与现代技术的融合。

在‘文学是竞争力’的旗帜下, 对引领大韩民国新韩流文化的学术单位进行集中培养。

**人文学及社会科学,
公演电影/舞蹈/器乐/国乐/设计等
艺术类专业的跨领域交流实现协同增益。**

**전통과 현대문화의 공존,
새로운 한류가 시작됩니다**

단국대학교는 문학, 사학, 철학 등 전통 인문학의 가치를 지키면서도 현대 기술과의 융합을 이뤄냈습니다.

여기에 ‘문화가 경쟁력’이라는 기치 아래 대한민국 신한류 문화를 선도하는 학문단위를 집중 육성해왔습니다.

**인문학 및 사회과학,
공연영화/무용/기악/국악/디자인 등
예술 전 분야에 걸친 전공이
시너지를 이룹니다.**

세계 최대 한자사전 「한한대사전」 완간

A complete edition of the world's largest "Hanja [Chinese Characters] Dictionary" 编撰世界最大规模的汉字字典《汉韩大辞典》

동양학연구원, 네이버에 「한국한자어사전」

검색 서비스 제공

The Oriental Studies Research Institute provides a search-service for "Korean-Hanja Dictionary" on Naver 东方学研究院向NAVER提供“韩国汉字词典”检索服务

일본연구소, 인문한국플러스 (HK+) 사업 수행

The Japan Research Institute carries out the "Humanities Korea Plus (HK+) Project" 日本研究所, 实行人文韩国+(HK+)项目

석주선기념박물관, ‘구글 아트프로젝트’ 통해

전 세계에 전통복식 홍보

SeokjuSun Museum promotes the Korean traditional clothing to the world through the 'Google Art Project' 石宙善纪念馆博物馆, 通过‘谷歌艺术计划’向全世界弘扬传统服饰

SW디자인융합센터, ‘창의적 문제해결 방법론’

디자인씽킹 교육

The SW Design Convergence Center carries out the design thinking training "Creative Problem Solving Methodology" SW设计融合中心提供设计思维教育-“创意性解决问题方法论”



From the basis of the Medical Science to the Food Industry of the Future

Dankook University Hospital and Dental Hospital are responsible for medical services in the central districts of Korea. In Sejong City, where medical facilities are scarce, we opened clinics and even dental hospitals in 2017. This is how Dankook University performs healing art of love regardless of any profit.

The concentration of academic and research departments in the medical, dental, pharmacology areas as well as bioengineering enables the active exchange and convergence; leading the development of the bio-industry, which is the future engine of national growth.

基于医疗科学技术, 发展到未来食物生物工程领域

檀国大学医院和牙科医院针对于韩国中部地区提供医疗服务。此外, 在2017年医疗设施不足的世宗市设立了医疗院和牙科医院, 檀国大学不为私利, 将医者仁心的理念发扬光大。

不仅是医学、牙医学及药学, 生命医学及生命资源等生命工学有关学科都集中在一起, 在学术及研究领域进行活跃的跨领域交流与合作, 以此培养引领国家未来发展的生物工程产业人才。

의료 과학을 기반으로 미래 먹거리 바이오 산업까지

중부권 의료 서비스를 책임지는 단국대학교병원과 치과병원 의료 시설이 부족한 세종시에 2017년 개원한 의원과 치과병원까지 단국대는 이익과 유불리에 상관없이 사랑의 인술을 펼칩니다.

의학, 치의학, 약학뿐 아니라 의생명, 생명자원 등 생명공학 학과가 밀집해 있어 학술, 연구분야에서 활발한 교류와 융합이 가능해 미래 국가성장 동력인 바이오 산업 육성을 선도하고 있습니다.



단국대학교병원, 치과대학병원, 죽전치과병원, 세종의원 · 치과병원 운영

Operation of the Dankook University Hospital, University Dental Hospital, Jukjeon Medical Dental Hospital, Sejong Medical Center and Dental Hospital
运营檀国大学医院, 牙科医院, 竹田牙科医院, 世宗医疗院及牙科医院

단국대학교병원 암센터 건립

Establishing of the Dankook University Hospital Cancer Center
檀国大学医院设立癌症中心

의학, 치의학, 약학, 생명공학 관련 학과 밀집

Concentration of the departments related to medicine, dentistry, pharmacy, and biotechnology
医学、牙医学、药学、生命科学相关学科密集

오송생명과학단지, 대덕연구단지 등과

생명과학 분야 클러스터 구축

Building of clusters on the field of life science with the Osong Life Science Complex, Daedeok Research Complex, etc.
与吴淞生命科学园区, 大德研究园区等构建生命科学领域集群



**12 Majors in Languages;
creating the “Dankook Global Village”**

Dankook University's Cheonan Campus is turning the campus into a small global village by running specialized majors in foreign languages. We teach language and culture that encompasses Asia, Europe, and South America and help the students develop a global mind by interacting with foreigners on campus.

DKU is the starting point of the future talent that will perform beyond South Korea, on the global stage.

12个外语专业, ‘檀国地球村’ 形成

檀国大学天安校区正在实现外语特性化并将校区打造成小型地球村。不分亚洲, 欧洲及南美洲, 给学生提供跨文化教育, 在校内便于与外国学生交流, 逐步拓展国际化视野。

跨越大韩民国, 走向世界舞台, 千里之行, 始于足下。

**12개 외국어 전공,
‘단국 지구촌’ 형성**

단국대학교 천안캠퍼스는 외국어 특성화를 실현해 캠퍼스를 작은 지구촌으로 만들고 있습니다.

아시아, 유럽, 남미를 아우르는 언어와 문화를 가르치고 교내에서 외국인과의 교류하며 글로벌 마인드를 키웁니다.

대한민국을 넘어 세계를 무대로 활약하는 인재의 첫 출발지입니다.



영어과, 글로벌한국어과, 중국학, 일본학,
몽골학, 중동학, 베트남학, 독일학,
프랑스학, 스페인중남미학, 러시아학,
포르투갈브라질학 전공 운영

Departments of English, Global Korean, China, Japan, Mongolia, Middle East, Vietnam, Germany, France, Spain and Central & South America, Russian, Portugal & Brazil
영어系, 全球韩国语系, 中国学, 日本学, 蒙古学, 中医学, 越南学, 德国学, 法国学, 西班牙中南美学, 俄罗斯学, 葡萄牙巴西学专业运营

캠퍼스 내 외국인과의 교류 위한
글로벌 프로그램 운영

Operation of Global Programs to interact with foreigners on campus
设立全球交流项目, 以使学生们能够与校内外外国学生充分交流

국제 여름/겨울학교 시행

International Summer/Winter School
国际夏/冬令营实行

권역별 지역학/신흥시장 지역학/글로벌 창업

Regional Studies/Regional Rising Market/Global Startup
各区域及各地域/新兴市场地域学/全球创业

GCC 국가연구소/몽골연구소/북방문화연구소

GCC National Research Institute/Mongol Research Institute/Northern Culture Research Institute
GCC国家研究所/蒙古研究所/北方文化研究所



목차

| | |
|---------------------|--------|
| 1. 전형일정 | ... 18 |
| 2. 모집단위 | ... 19 |
| 3. 지원자격 | ... 23 |
| 4. 전형방법 | ... 24 |
| 5. 입학원서 접수 안내 | ... 26 |
| 6. 서류제출 | ... 27 |
| 7. 지원자 유의사항 | ... 30 |
| 8. 장학금 및 등록금 안내 | ... 32 |
| 9. 생활관 안내 | ... 35 |
| 10. 비자관련 안내 | ... 37 |
| 11. 캠퍼스 맵 | ... 82 |
| <작성서식> | |
| - 학력조회동의서 | ... 88 |
| - 재정보증서 | ... 89 |
| - 자기소개서 | ... 90 |
| - 기숙사입사신청서 | ... 92 |
| - 학교 정보 확인서 | ... 93 |
| - 번역자 확인서 | ... 94 |



입학 한눈에 보기



01 전형일정

| 구분 | 일정 | 유의사항 |
|------------------|------------------------------------|---|
| 원서접수 | 2023. 10. 2(월) 10:00 ~ 20(금) 17:00 | 온라인 접수만 실시함 > www.jinhakapply.com |
| 서류제출 마감 | 2023. 10. 26(목)까지 도착분에 한함 | 입학원서 접수사이트에서 제출서류 발송용 봉투 라벨(주소)을 출력하여 부착한 후 등기우편으로 제출하여야 하며, 기한 내 미제출 시에는 사정대상에서 제외함 |
| 온라인 한국어시험 | 2023. 11. 4(토) 10:00 ~ | 1. 신입학 지원자 중 TOPIK 3급 이상 미취득자에 한하여 온라인 한국어시험을 실시함(영어트랙 제외) 2. 온라인 한국어시험에 관한 사항은 고사 5일전 대학 입학안내 홈페이지 (http://ipsi.dankook.ac.kr)에 발표함 3. 시험 당일 수험표와 신분증(여권, 외국인등록증)을 반드시 지참하여야 함 |
| 온라인 한국어시험 합격자 발표 | 2023. 11. 9(목) 14:00 | 대학 입학안내 홈페이지(http://ipsi.dankook.ac.kr)에 발표함 (개별통보는 하지 않음) |
| 최종 합격자 발표 | 2023. 11. 24(금) 14:00 | 대학 입학안내 홈페이지(http://ipsi.dankook.ac.kr)에 발표함 (개별통보는 하지 않음) |
| 등록금 납부 | 2024. 1. 10(수) 9:00 ~ 19(금) 16:00 | 1. 합격자는 합격통지서와 등록금 납부고지서를 대학 입학안내 홈페이지에서 출력하여 지정은행에 납부하여야 함(인터넷뱅킹, 폰뱅킹 가능) 2. 납부기간 내에 등록금을 납부하지 않을 경우 합격이 취소됨 3. 자세한 사항은 합격자 발표 시 대학 입학안내 홈페이지에 게재되는 "합격자 등록안내문" 참조 |
| 표준입학허가서 발급 | 2024. 1. 22(월) ~ | 발급처 : 국제처 국제교육1팀(국제관 317호) |

→ 상기 일정은 대학 사정에 따라 변경될 수 있으며, 변경 시에는 대학 입학안내 홈페이지에 사전 공지함.

02 모집단위

죽전캠퍼스

| 캠퍼스 | 계열 | 대학 | 모집 단위 | 편입학 | | | |
|-------------|---------|---------------------------|-------------------------------------|---------------------|-----|-----|---|
| | | | | 신입학 | 2학년 | 3학년 | |
| 죽전 | 인문 | 문과 | 국어국문학과 | ○ | ○ | ○ | |
| | | | 사학과 | ○ | ○ | ○ | |
| | | | 철학과 | ○ | ○ | ○ | |
| | | | 영미인문학과 | ○ | ○ | ○ | |
| | | 법과 | 법학과 | ○ | ○ | ○ | |
| | | 사회과학 | 정치외교학과 | ○ | ○ | ○ | |
| | | | 행정학과 | ○ | ○ | ○ | |
| | | | 도시계획·부동산학부 [도시지역계획학], [부동산학] | ○ | ○ | ○ | |
| | | | 미디어커뮤니케이션학부 [저널리즘], [영상콘텐츠], [광고홍보] | ○ | ○ | X | |
| | | 경영경제 | 커뮤니케이션학부 [저널리즘], [영상콘텐츠], [광고홍보] | X | X | ○ | |
| | | | 상담학과 | ○ | ○ | ○ | |
| | | | 경영경제 | 경제학과 | ○ | ○ | ○ |
| | | | 무역학과 | ○ | ○ | ○ | |
| | | 자연 | 공과 | 경영학부 [경영학], [회계학] | ○ | ○ | ○ |
| | | | | 글로벌경영학과 | ○ | X | X |
| | | | | 국제학부 - 국제경영학전공 | X | ○ | ○ |
| | 전자전기공학과 | | | ○ | X | X | |
| | SW융합 | | 융합반도체공학과 | ○ | X | X | |
| | | | 전자전기공학부 - 전자전기공학전공 | X | ○ | X | |
| | | | 융합반도체공학전공 | X | ○ | X | |
| | | | 전자전기공학부 - [전자전기공학전공] | X | X | ○ | |
| | 예능 | | 음악·예술 | [융합반도체공학전공] | X | X | ○ |
| | | | | 고분자시스템공학부 - 고분자공학전공 | ○ | ○ | ○ |
| | | | | 파이버융합소재공학전공 | ○ | ○ | ○ |
| | | | | 토목환경공학과 | ○ | ○ | ○ |
| | | | 기계공학과 | ○ | ○ | ○ | |
| | | | 화학공학과 | ○ | ○ | ○ | |
| | | | 건축학부 - 건축학전공(5년제) | ○ | ○ | ○ | |
| | | | 건축공학전공 | ○ | ○ | ○ | |
| | 예능 | 음악·예술 | 소프트웨어학과 | ○ | ○ | ○ | |
| | | | 컴퓨터공학과 | ○ | ○ | ○ | |
| | | | 모바일시스템공학과 | ○ | ○ | ○ | |
| 통계데이터사이언스학과 | | | ○ | X | X | | |
| 정보통계학과 | X | ○ | ○ | | | | |
| 예능 | 음악·예술 | 도예과* | ○ | ○ | ○ | | |
| | | 디자인학부* - 커뮤니케이션디자인전공 | ○ | ○ | ○ | | |
| | | 패션산업디자인전공 | ○ | ○ | ○ | | |
| | | 공연영화학부* - 영화전공 - 이론·연출·스텝 | ○ | ○ | ○ | | |
| 연극전공 - 연출 | ○ | ○ | ○ | | | | |
| 연극전공 - 연기 | ○ | ○ | ○ | | | | |
| 뮤지컬전공 - 연기 | ○ | ○ | ○ | | | | |

| 캠퍼스 | 계열 | 대학 | 모집 단위 | 신입학 | | |
|-----|----|-------|--------------------|-----|-----|-----|
| | | | | 2학년 | 3학년 | 4학년 |
| 죽전 | 예능 | 음악·예술 | 무용과* - 한국무용 | ○ | ○ | ○ |
| | | | 발레 | ○ | ○ | ○ |
| | | | 현대무용 | ○ | ○ | ○ |
| | | | 음악학부* - 피아노전공 | ○ | ○ | ○ |
| | | | 관현악전공 - 현악-바이올린 | ○ | ○ | ○ |
| | | | 비올라 | ○ | ○ | ○ |
| | | | 첼로 | ○ | ○ | ○ |
| | | | 더블베이스 | ○ | ○ | ○ |
| | | | 관악(목관) - 플루트 | ○ | ○ | ○ |
| | | | 오보에 | ○ | ○ | ○ |
| | | | 클라리넷 | ○ | ○ | ○ |
| | | | 바순 | ○ | ○ | ○ |
| | | | 관악(금관) - 호른 | ○ | ○ | ○ |
| | | | 트럼펫 | ○ | ○ | ○ |
| | | | 테너트럼본 | ○ | ○ | ○ |
| | | | 베이스트럼본 | ○ | ○ | ○ |
| | | | 튜바 | ○ | ○ | ○ |
| | | | 타악기 | ○ | ○ | ○ |
| | | | 성악전공 | ○ | ○ | ○ |
| | | | 작곡전공 | ○ | ○ | ○ |
| | | | 국악전공 - 기악(관악) - 피리 | ○ | ○ | ○ |
| | | | 대금 | ○ | ○ | ○ |
| | | | 해금 | ○ | ○ | ○ |
| | | | 아쟁 | ○ | ○ | ○ |
| | | | 소금·단소 | ○ | ○ | ○ |
| | | | 기악(현악) - 거문고 | ○ | ○ | ○ |
| | | | 가야금 | ○ | ○ | ○ |
| | | | 기악(타악) - 장고·꽁과리 | ○ | ○ | ○ |
| | | | 성악 - 정가 | ○ | ○ | ○ |
| | | | 판소리 | ○ | ○ | ○ |
| | | | 경서도창 | ○ | ○ | ○ |
| | | | 이론 | ○ | ○ | ○ |
| 작곡 | ○ | ○ | ○ | | | |

천안캠퍼스

| 캠퍼스 | 계열 | 대학 | 모집 단위 | 신입학 | | | | |
|------------------|--------|--------------------|---------------------|------|----------------|-----|---|---|
| | | | | 2학년 | 3학년 | 4학년 | | |
| 천안 | 인문 | 외국어 | 아시아중동학부 - 중국학전공 | ○ | ○ | ○ | | |
| | | | 일본학전공 | ○ | ○ | ○ | | |
| | | | 몽골학전공 | ○ | ○ | ○ | | |
| | | | 중동학전공 | ○ | ○ | ○ | | |
| | | | 베트남학전공 | ○ | ○ | ○ | | |
| | | | 유럽중남미학부 - 독일학전공 | ○ | ○ | ○ | | |
| | | | 프랑스학전공 | ○ | ○ | ○ | | |
| | | | 스페인중남미학전공 | ○ | ○ | ○ | | |
| | | | 러시아학전공 | ○ | ○ | ○ | | |
| | | | 포르투갈브라질학전공 | ○ | ○ | ○ | | |
| | | | 영어과 | ○ | ○ | ○ | | |
| | | | 글로벌한국어과 | ○ | ○ | ○ | | |
| | | | 자연 | 과학기술 | 수학과 | ○ | ○ | ○ |
| | | | | | 물리학과 | ○ | ○ | ○ |
| | | | | | 화학과 | ○ | ○ | ○ |
| | | | | | 식품영양학과 | ○ | ○ | ○ |
| | | | | | 생명과학부 - 생명과학전공 | X | ○ | ○ |
| | | | | | 미생물학전공 | X | ○ | ○ |
| | 신소재공학과 | ○ | | | ○ | ○ | | |
| | 식품공학과 | X | | | ○ | ○ | | |
| | 에너지공학과 | ○ | | | ○ | ○ | | |
| | 경영공학과 | ○ | | | ○ | ○ | | |
| | 바이오융합 | 생명자원학부 - 식량생명공학전공 | | | ○ | X | X | |
| | | 동물생명공학전공 | | | ○ | X | X | |
| | | 환경원예학전공 | | | ○ | X | X | |
| | | 녹지조경학전공 | | | ○ | X | X | |
| | | 의생명과학부 - 생명과학전공 | | | ○ | X | X | |
| | | 미생물학전공 | | | ○ | X | X | |
| | 생명공학 | 식품공학과 | | | ○ | X | X | |
| | | 생명자원학부 - 식량생명공학전공 | | | X | ○ | ○ | |
| | | 동물생명공학전공 | X | ○ | X | | | |
| | | 동물자원학전공 | X | X | ○ | | | |
| | | 환경원예조경학부 - 환경원예학전공 | X | ○ | ○ | | | |
| | | 녹지조경학전공 | X | ○ | ○ | | | |
| | 예능 | 예술 | 미술학부* - 공예(금속·섬유)전공 | ○ | ○ | ○ | | |
| | | | 동양화전공 | ○ | ○ | ○ | | |
| | | | 서양화전공 | ○ | ○ | ○ | | |
| | | | 조소전공 | ○ | ○ | ○ | | |
| | | | 문예창작과 | ○ | ○ | ○ | | |
| | | | 뉴뮤직학부* - 뮤직테크놀러지전공 | ○ | X | X | | |
| | | | 재즈퍼포먼스전공 | ○ | X | X | | |
| | | | 싱어송라이팅전공 | ○ | X | X | | |
| 뉴뮤직과* - 사운드엔지니어링 | | | X | ○ | ○ | | | |
| 뮤직테크놀러지&컴퓨터음악작곡 | | | X | ○ | ○ | | | |
| 재즈피아노 | | | X | ○ | ○ | | | |
| 재즈베이스 | | | X | ○ | ○ | | | |

03 지원 자격

| 캠퍼스 | 계열 | 대학 | 모집 단위 | 신입학 | | | | |
|--------|----|--------|--------------------|---------|--------|-----|---|---|
| | | | | 2학년 | 3학년 | 편입학 | | |
| 천안 | 예능 | 예술 | 뉴뮤직과* - 재즈드럼 | X | ○ | ○ | | |
| | | | 재즈기타/관현악 | X | ○ | ○ | | |
| | | | 싱어송라이팅 | X | ○ | ○ | | |
| | 체육 | 스포츠과학 | 생활체육학과 | ○ | ○ | ○ | | |
| | | | 스포츠경영학과 | ○ | ○ | ○ | | |
| | | | 국제스포츠학부 - 운동처방재활전공 | ○ | ○ | ○ | | |
| | | | 국제스포츠전공 태권도전공 | ○ | ○ | ○ | | |
| | 의학 | 의과대학 | 의예과(사우디정부장학생) | ○ | X | X | | |
| | 인문 | 공공인재 | 공공정책학과 | ○ | X | X | | |
| | | | 사회복지학과 | ○ | X | X | | |
| | | | 식품자원경제학과 | ○ | X | X | | |
| | 인문 | 보건과학 | 보건행정학과 | ○ | X | X | | |
| | | | 임상병리학과 | ○ | X | X | | |
| | 자연 | | 물리치료학과 | ○ | X | X | | |
| | | | 심리치료학과 | ○ | X | X | | |
| | | | 인문 | 공공·보건과학 | 공공정책학과 | X | ○ | ○ |
| | | | | | 사회복지학과 | X | ○ | ○ |
| | 자연 | | 환경자원경제학과 | X | ○ | ○ | | |
| | | | 보건행정학과 | X | ○ | ○ | | |
| | | | 임상병리학과 | X | ○ | ○ | | |
| 물리치료학과 | | | X | ○ | ○ | | | |
| | | 심리치료학과 | X | ○ | ○ | | | |

참고사항

- “*” 표시된 모집단위 지원자의 경우 실기전형(동영상 또는 포트폴리오) 자료 제출 필수
- 2024학년도 대학 교육편제 조정 결과에 따라 모집단위는 변경될 수 있음.
- 모집단위에서 ‘[]’는 학부의 ‘교육과정 운영단위 전공’ 표시임.
- 사범대학은 모집하지 않음.
- 건축학전공(5년제) 신입생은 건축학교육인증(KAAB)을 위한 ‘건축학교육인증과정’에 배정되며, 공과대학(건축학전공 제외) 신입생은 공학교육인증(ABEEK)을 위한 ‘공학교육전문과정’에 배정됨.
- 국악전공 지원자는 지원시 세부전공확인을 위해 국제교육1팀 확인 후 지원 바람.

공동사항

| 전형구분 | 지원 자격 | 주의사항 |
|------|--|--|
| 신입 | 부모가 모두 외국인인 외국인으로 초·중등 전 교육과정을 이수한 국내·외 고등학교 졸업(예정)자 | → 죽전·천안캠퍼스 간 복수지원 할 수 없음 → 복수국적자 및 무국적자는 지원할 수 없음 |
| 편입 | 2학년 편입 부모가 모두 외국인인 외국인으로 - 국내 정규 4년제 대학에서 1년(2학기) 이상 수료(예정) 후 33학점 이상 취득(예정)한 자 - 외국소재 정규대학에서 1년(2학기) 이상 수료하고 학사학위 취득에 필요한 최저학점의 1/4 이상 취득한 자 - 국내·외 정규 전문대학 졸업(예정)자 | → 해당국 교육관계 법령에 의거 소정의 학력이 인정되는 정규학교 과정만을 인정함 → 검정고시, 홈스쿨링, 사이버학습 등의 출신자는 지원할 수 없음 |
| | 3학년 편입 부모가 모두 외국인인 외국인으로 - 국내 정규 4년제 대학에서 2년(4학기) 이상 수료(예정) 후 65학점 이상 취득(예정)한 자 - 외국소재 정규대학에서 2년(4학기) 이상 수료하고 학사학위 취득에 필요한 최저학점의 1/2 이상 취득한 자 - 국내·외 정규 전문대학 졸업(예정)자 | |

→ 편입생의 경우 전적대학 전공 및 이수한 교과목에 따라 본교의 인정학점이 결정되며, 인정학점 부족 시 정규학기 이내에 졸업요구학점 취득이 어려울 수 있음.

어학기준

| 구분 | 학과 | 지원 자격 |
|--------------|---------------------|---|
| 한국어 트랙 (신입학) | 모든 학과 | TOPIK 3급 이상 소지자 또는 미소지자 중 온라인 한국어시험 응시 가능자 |
| 한국어 트랙 (편입학) | 모든 학과 | TOPIK 3급 이상 소지자 또는 단국대학교 글로벌교육센터 어학연수과정 3단계 이상 이수자(또는 단국대학교 글로벌교육센터 어학연수과정 4단계 이상 성적증명서 제출 가능자) |
| 영어트랙 (신·편입학) | 경영경제대학 글로벌경영학과 | TOEFL iBT 71 이상 또는 IELTS 5.5 이상 소지자 |
| | SW융합대학 모바일시스템공학과 | TOEFL iBT 80 이상 또는 IELTS 6.5 이상 소지자 |

- 어학성적표의 경우 원서접수 개시일 기준 유효한 성적표만 인정함.(단, 원서접수 기간 중 성적이 발표되는 경우 해당 성적으로 지원 가능)
- 편입학 지원자 중 최종 합격자 발표일 이전에 TOPIK 성적이 발표되는 경우 TOPIK 3급 이상의 성적 취득이 가능하다는 전제하에 지원이 가능함(성적발표일에 TOPIK 3급 이상의 성적표를 반드시 제출해야 하며, 미제출 시 불합격 처리됨)

기타 지원 자격

| 전형구분 | 대상자 | 지원 자격 |
|------|-----------------------------------|-------------------------------------|
| 신입학 | 해당국 정부지원 장학생, 자매결연대학 총(학)장 추천자 | TOPIK 1급 이상 지원 가능(온라인 한국어시험 응시 불필요) |
| 편입학 | 천안캠퍼스 예능, 체육계열 지원자 (뉴뮤직학부 제외) | 전적대학에서 동일 계열을 전공한 자 |

→ 해당국 실정상 4년제 정규대학이라고 인정하기 어려운 학교과정 출신은 편입학 대상자로 인정하지 않음.

04 전형방법

전형요소별 반영방법

| 구분 | TOPIK | 선발모형 | 전형요소별 반영비율(%) | | 비고 |
|-----------------|------------|------|---------------|------------|--|
| | | | 온라인 한국어시험 | 서류 및 실기전형* | |
| 한국어트랙 (신입학) | 3급 이상 소지자 | 1 단계 | PASS | - | |
| | | 2 단계 | - | 100%(P/F) | |
| | 3급 이상 미소지자 | 1 단계 | 100%(P/F) | - | |
| | | 2 단계 | - | 100%(P/F) | |
| | | | | | → 온라인 한국어시험 : 한국어능력시험(TOPIK)에 준하는 구술시험 → 합격기준 : 60점 이상 취득(100점 만점 기준) → 온라인 한국어시험 면제대상자 : 해당국 정부지원 장학생, 자매결연대학 총(학)장 추천자로서 TOPIK 1급 이상 소지자 |
| 한국어트랙 (편입학) | - | 1 단계 | PASS | - | |
| | | 2 단계 | - | 100%(P/F) | |
| 영어트랙 (신·편입학) | - | 1 단계 | PASS | - | - 영어트랙 어학기준 충족자에 한해 서류전형 (100%) 시행 |
| | | 2 단계 | - | 100%(P/F) | |

→ 실기전형은 예능계열 학과에 한함(예술대학 문예창작과 제외)

→ TOPIK 3급 이상 미소지자의 경우 1단계 온라인 한국어시험 합격자에 한해 2단계 서류전형을 시행함.

실기전형 세부사항

| 구분 | 세부사항 | | | | | | | | | | | | | | |
|---|--|----|------|---------------------|-------------------|----------------------|--------------------|-----------|--------------------|----------------------|----------------------------|---|---------|----------------|------------|
| 제출 대상 | 예능계열 학과 지원자(예술대학 문예창작과 제외) | | | | | | | | | | | | | | |
| 평가 방식 | 비대면 심사 | | | | | | | | | | | | | | |
| 평가 자료 | 동영상(USB) 또는 포트폴리오(실물 또는 USB) | | | | | | | | | | | | | | |
| 제출자료 | 본인이 지원한 세부 모집단위 분야와 관련된 지원자의 성과물(포트폴리오, 작품사진, 연주/연기 동영상 등)을 자유양식으로 제출 - 실물 형태 : A4 규격 - 파일 형태 : PDF 또는 동영상 파일로 USB 저장 - 동영상의 경우 본인의 얼굴과 수험표를 화면에 클로즈업 후 진행 - 모집단위별 세부사항 | | | | | | | | | | | | | | |
| | <table border="1"> <thead> <tr> <th>구분</th> <th>세부사항</th> </tr> </thead> <tbody> <tr> <td>공연영화학부 영화, 연극(연출)전공</td> <td>자기소개(동영상) 및 포트폴리오</td> </tr> <tr> <td>공연영화학부 연극(연기), 뮤지컬전공</td> <td>자기소개(동영상) 및 연기 동영상</td> </tr> <tr> <td>음악학부 성악전공</td> <td>이태리 또는 독일가곡(암보 권장)</td> </tr> <tr> <td>음악학부 국악전공(이론, 작곡 제외)</td> <td>한국 또는 자국전통 기악 또는 성악(암보 권장)</td> </tr> <tr> <td>뉴뮤직학부 재즈퍼포먼스전공 (재즈피아노, 재즈베이스, 재즈드럼, 재즈기타/관현악 포함)</td> <td>무반주 연주곡</td> </tr> <tr> <td>뉴뮤직학부 싱어송라이팅전공</td> <td>본인 직접반주 권장</td> </tr> </tbody> </table> | 구분 | 세부사항 | 공연영화학부 영화, 연극(연출)전공 | 자기소개(동영상) 및 포트폴리오 | 공연영화학부 연극(연기), 뮤지컬전공 | 자기소개(동영상) 및 연기 동영상 | 음악학부 성악전공 | 이태리 또는 독일가곡(암보 권장) | 음악학부 국악전공(이론, 작곡 제외) | 한국 또는 자국전통 기악 또는 성악(암보 권장) | 뉴뮤직학부 재즈퍼포먼스전공 (재즈피아노, 재즈베이스, 재즈드럼, 재즈기타/관현악 포함) | 무반주 연주곡 | 뉴뮤직학부 싱어송라이팅전공 | 본인 직접반주 권장 |
| 구분 | 세부사항 | | | | | | | | | | | | | | |
| 공연영화학부 영화, 연극(연출)전공 | 자기소개(동영상) 및 포트폴리오 | | | | | | | | | | | | | | |
| 공연영화학부 연극(연기), 뮤지컬전공 | 자기소개(동영상) 및 연기 동영상 | | | | | | | | | | | | | | |
| 음악학부 성악전공 | 이태리 또는 독일가곡(암보 권장) | | | | | | | | | | | | | | |
| 음악학부 국악전공(이론, 작곡 제외) | 한국 또는 자국전통 기악 또는 성악(암보 권장) | | | | | | | | | | | | | | |
| 뉴뮤직학부 재즈퍼포먼스전공 (재즈피아노, 재즈베이스, 재즈드럼, 재즈기타/관현악 포함) | 무반주 연주곡 | | | | | | | | | | | | | | |
| 뉴뮤직학부 싱어송라이팅전공 | 본인 직접반주 권장 | | | | | | | | | | | | | | |

온라인 한국어시험 안내

- 대상 : 신입학 지원자 중 TOPIK 3급 이상 미소지자(영어트랙 지원자 제외)
- 일시 : 2023. 11. 4(토) 10:00 ~
- 출제형태 : 한국어능력시험(TOPIK)에 준하는 구술시험
- 합격기준 : 60점 이상(100점 만점)
- 면제대상 : 해당국 정부지원 장학생, 자매결연대학 총(학)장 추천자 중 한국어능력시험(TOPIK) 1급 이상 소지자
- 온라인 한국어시험 대상자 전원을 대상으로 사전점검을 시행하며, 사전점검에 응하지 않을 시 응시 의사가 없는 것으로 간주함.

선발방법

- 전형방법 및 절차에 따라 요건 충족 시 합격 처리.
- 지원자격 미달자, 서류 미제출(미비)자, 부정행위자, 신분증 미확인자 등은 사정에서 제외.
→ 학력인증서류 미제출자는 사정대상에서 제외함.
- 온라인 한국어시험 결시자 또는 온라인 한국어시험 60점 미만인 자는 사정대상에서 제외함.
- 실기전형 대상자가 아래 항목에 해당할 경우 사정대상에서 제외함

- 1) 실기전형 자료를 미제출한 경우
- 2) 실기전형 세부사항에서 요구하는 세부 사항을 충족하지 못한 경우
- 3) 평가위원의 평균점수가 60점 미만인 경우

- 모집요강에 명시되지 않은 기타 사항은 외국인 신·편입생 선발 사정원칙에 따라 처리함.

05 입학원서 접수 안내

접수기간

2023. 10. 2(월) 10:00 ~ 20(금) 17:00

05



전형료

| 모집단위 | 전형료 | 전형료 환불 |
|-------------------------|-----|----------|
| 전 계열 (예능계열 제외) | 1단계 | 60,000원 |
| | 2단계 | 60,000원 |
| | 합계 | 120,000원 |
| 예능계열 (예술대학 문예창작과 제외) | 1단계 | 60,000원 |
| | 2단계 | 100,000원 |
| | 합계 | 160,000원 |

→ 결재된 전형료는 일체 반환하지 않음.

06 서류 제출

제출기간 : 2023. 10. 2(월) ~ 26(목)까지 도착분에 한함

제출방법 : 등기우편으로 발송 「입학원서 접수사이트에서 제출서류 발송용 봉투 라벨(주소)을 출력 후 서류봉투에 부착하여 제출」

제출장소 : (16890) 경기도 용인시 수지구 죽전로 152(죽전동 126번지) 단국대학교 국제처 국제교육1팀(국제관 317호)

| 제출서류 | 신입학 | 편입학 | 비고 |
|--|-----|-----|--|
| 1) 입학원서, 자기소개서* 및 학업계획서* 1부 | ○ | ○ | 본인 서명 후 제출 |
| 2) 고교 졸업(예정)증명서 1부 | ○ | | - 중국 내 고등학교 졸업(예정)자 : p.28 서류제출 시 유의사항 참조 - 중국 외 고등학교 졸업(예정)자 : 아포스티유 또는 영사인증 (한국어 또는 영어) 원본 제출 |
| 3) 고교 성적증명서 1부 | ○ | | - 번역공증, 영사인증 또는 아포스티유 원본 제출 (한국어 또는 영어) |
| 4) 전적대학 대학 졸업(예정)증명서 또는 재적(재학, 휴학, 제적)증명서 1부 | | ○ | 중국 대학 졸업자 - 졸업(예정)증명서 또는 재적(재학, 휴학, 제적)증명서 : 학신망 온라인 인증서 출력본(영어) 또는 영사인증(한국어 또는 영어) 원본 제출 |
| 5) 전적대학 성적증명서 1부 | | ○ | - 성적증명서* : 번역공증 또는 영사인증(한국어 또는 영어) 원본 제출 중국 외 대학 졸업자 아포스티유 또는 영사인증(한국어 또는 영어) 원본 |
| 6) 전적대학 졸업학점 명시 자료 | | ○ | - 전적(전문)대학(소속 학과)의 졸업 이수 학점이 명시되어 있는 자료 제출(한국어 또는 영어) (홈페이지상의 내용 출력물 또는 전적(전문)대학의 확인서 제출 가능) - 전문대학 또는 4년제 대학교 졸업(예정)자의 경우 졸업(예정) 증명서 제출 시 생략 가능 |
| 7) 단국대학교 글로벌교육센터 성적증명서 | | ○ | - 편입학 지원자 중 TOPIK 3급 이상 미소지자에 한함 |
| 8) 지원자 여권 사본 1부 | ○ | ○ | - 여권 만료기간이 최소 1년 이상 남아있어야 함 |
| 9) 외국국적증명서류 1부 (여권 사본, 신분증 사본 등) | ○ | ○ | - 지원자와 부모 모두 제출 |
| 10) 친족관계증명서류 각 1부 (중국인의 경우 호구부 공증본 추가 제출) | ○ | ○ | - 친족관계증명서에 해당하는 외국정부기관 발행 증명서 - 부모가 이혼 또는 사망한 경우 이를 증명할 정부발행 서류 추가 제출 - 한국어 또는 영어가 아닌 언어로 되어있는 경우 번역공증 필수 |
| 11) 우리나라에서의 외국인등록증 사본 1부 | ○ | ○ | - 소지자에 한함 |
| 12) 재정보증 관련서류* 각 1부 | ○ | ○ | - 지원자 또는 부모 명의 국내·외 은행 잔고증명서 - D-4비자 소지자의 경우 국내은행 발행 본인 명의 잔고증명서 제출 권장 - 재정능력 입증을 위해 일정기간동안의 잔고내역을 추가로 요청할 수 있음 |
| 13) 학력조회동의서* 각 1부 | ○ | ○ | - 신입학은 고등학교, 편입학은 전적대학 작성 |
| 14) 한국어능력시험(TOPIK)인증서 1부 | ○ | ○ | - 소지자에 한함 |
| 15) 한국어능력시험(TOPIK) 접수증 1부 | | ○ | - 편입학 지원자 중 TOPIK 접수자에 한함 |
| 16) 출입국 사실증명서 1부 | ○ | ○ | - 국내거주자에 한함(D4, D2, F비자 소지자 필수 제출) |
| 17) TOEFL iBT, IELTS 성적표 1부 | ○ | ○ | - 영어트랙 지원자에 한함 |
| 18) 기숙사 입사 신청서 1부 | ○ | ○ | - 기숙사 지원자에 한함 |
| 19) 실기전형 심사자료(동영상 또는 포트폴리오) | ○ | ○ | - 예능계열 지원자에 한함(예술대학 문예창작과 제외) |

06

- 모든 서류는 원서접수 개시일 기준 6개월 이내에 발급한 것만 인정함.(단, 잔고증명서의 경우 아래 기준을 따름.)
- 잔고증명서의 경우 원서접수 개시일로부터 30일 이내에 발급된 것만 인정하나, 잔고증명서 상에 유효기간이 있는 경우 유효기간까지 유효한 잔고증명서로 인정함.(단, 발급일로부터 최대 6개월까지만 인정.)
- 소속 고등학교 또는 대학(교)에서 발급된 한국어 또는 영어 성적증명서 원본 제출 시 별도의 아포스티유, 영사확인 및 번역공증이 필요하지 않음.
- 모든 서류는 순서대로 준비하여 제출하여야 함.
- 모든 서류는 원본제출을 원칙으로 하나, 사본을 제출할 경우에는 발급기관 또는 국제처 국제교육1팀에서 원본대조 확인이 필요함.
- 해외지원자는 반드시 입학문의 후 지원바람.(입국비자 취득 관련하여 추가서류 요청할 수 있음.)
- 어학성적표의 경우 원서접수 개시일 기준 유효한 성적표만 인정함.
- 해당국 정부지원 장학생은 장학금 지원관련 증빙서류를 추가로 제출하여야 함.
- *표시되어 있는 서류는 진학어플라이 원서접수 페이지에서 전형료 결제 이후 다운받아 작성함.
- 정규 4년제 대학 1년 이상 수료자는 졸업요구하기, 이수학점, 학사학위 취득 최저학점 등을 확인할 수 있는 증명서를 제출하여야 함.
- 성적증명서에는 모든 학기의 성적이 명시되어 있어야 하며, 누락된 경우 교육기관에서 발급한 사유서를 추가 제출해야 함.(영어나 한국어가 아니면 번역공증 필수.)

서류제출 시 유의사항

1. 졸업(예정)증명서

| 구분 | 대상 | 제출 서류 |
|-----|----------------------|---|
| 신입학 | 중국 일반고 | 1. 졸업자: 학신망(学信网) 온라인 인증서 출력본(영어) 2. 졸업예정자: 졸업예정증명서 영사인증 원본 |
| | 중국 중등직업학교 졸업자 | 1. 온라인 발행 ◎ 지방 교육 당국 발행 졸업(예정)증명서(온라인에서 진위 여부 확인 가능한 경우만 인정) → 주중한국영사확인 필요 2. 오프라인 발행 ◎ 지방 교육 당국 발행 졸업(예정)증명서 → 주중한국영사확인 필요+ 학교정보확인서* ◎ 학교 자체 발행 졸업(예정)증명서 → 성교육청(시교육국) 확인 → 주중한국영사확인 필요 + 학교정보확인서* |
| | 중국 기타 고졸학력 인정 학교 졸업자 | 인적자원사회보장부 공식 홈페이지(http://www.mohrss.gov.cn/) 온라인 조회본(온라인에서 진위 여부 확인 가능한 경우만 인정) → 주중한국영사확인 필요 학교 자체 발행 졸업증명서 → 주중한국영사확인+설립허가증 사본(공증 불필요) * 설립허가증은 사업단위법인증서(事业单位法人证书) 또는 민판학교 판학허가증(民办学校办学许可证)을 뜻하며, 학력교육과정만 인정함 |
| 편입학 | 편입학 합격자 전체 | 1. (전문)학사학위 취득(예정)자: (전문)학사 졸업증명서 ◎ 중국 내 (전문)대학 : 학신망(学信网) 인증보고서 출력본 ◎ 한국 내 (전문)대학 : 졸업증명서 원본 ◎ 중국 외 (전문)대학 : 영사인증 또는 아포스티유 원본 2. 4년제 대학 재학(휴학)생 : 고등학교 졸업증명서 + 학사 재학(휴학, 제적)증명서 ◎ 학신망(学信网) 인증보고서 제출(비중국의 경우 영사인증 또는 아포스티유 제출) ◎ 중국 중등직업학교 또는 기타 고졸학력 인정 학교 졸업자의 경우 위 신입학 추가 제출 서류 기준을 따름 |

★ 표시되어 있는 서류는 원서접수 홈페이지(<http://jinhakapply.com>)에서 다운받아 작성하여야 함.

→ 신입학 지원자 중 고등학교 졸업예정증명서를 제출한 자는 고등학교 졸업증명서 제출 이후 표준입학허가서 발급이 가능함.(학신망 온라인 인증서 출력본, 아포스티유 또는 영사인증 원본.)

- 편입학 지원자 중 전적대학 졸업예정증명서 또는 수료예정증명서를 제출한 자는 전적대학 졸업증명서 또는 수료증명서 제출 이후 표준입학허가서 발급이 가능함.(학신망 온라인 인증서 출력본, 아포스티유 또는 영사인증 원본.)
- 2. 영어 및 한국어를 제외한 외국어로 된 서류는 공증받은 영어 또는 한국어 번역본과 번역자 확인서, 번역자 신분증 사본을 반드시 함께 제출하여야 함(번역자 확인서, 번역자 신분증의 경우 공증 불필요)
- 3. 조기졸업, 월반, 성적 및 재학기록 폐기 등 특이한 사유가 있을 시에는 해당 학교에서 사유서를 발급받아 제출하여야 함.
- 4. 제출서류 상의 이름이 다른 경우에는 해당 국가기관에서 발급하는 동일인임을 증명하는 서류를 첨부하여야 함.
- 5. 전형기간 중 필요에 따라 개별적으로 추가 서류를 요청할 수 있음.
- 6. 제출된 모든 서류는 일체 반환하지 않음.
- 7. 재정보증 관련서류

| 구분 | 제출서류 |
|-----------------------|--|
| 지원자 본인 또는 부모가 보증인인 경우 | → 재정보증서(대학 소정양식) 1부 → 지원자 또는 부모 명의 국내·외 은행 잔고증명서 1부 (₩20,000,000 이상 또는 그 상당의 금액) → 단, 재정능력 입증을 위해 일정기간동안의 잔고내역을 추가로 요청할 수 있음 |
| 외부기관의 장학금을 지원받는 경우 | → 장학금 지급확인서(지급기관 발급) 1부 |

8. 합격 후 VISA 신청(또는 자격변경) 시 재외공관(또는 출입국외국인청)의 규정에 따라 학력인증서류, 잔고증명서 등의 서류를 제출할 수 있으니 별도로 준비하기 바람.

아포스티유 협약에 따른 제출서류 안내

아포스티유 협약 : 협약 가입국들 사이에서 공문서의 상호간 인증을 보다 용이하게 하기 위해, 외국 공관의 영사확인 등 복잡한 인증절차를 폐지하는 대신 공문서 발행국가가 이를 확인(Legalization)하는 내용을 골자로 하는 다자간 협약.

→ 명칭 : Convention Abolishing the Requirement of Legalization for Foreign Public Document (외국 공문서에 대한 인증의 요구를 폐지하는 협약)

제출 방법

해당국 정부(대한민국의 경우 외교통상부)에서 지정한 기관에서 아포스티유 확인을 받아 확인서와 함께 제출.

아포스티유 가입국 안내 페이지 https://www.0404.go.kr/consulate/consul_apo.jsp

07 지원자 유의사항

원서접수

1. 입학원서는 반드시 수험생 본인이 직접 작성해야 함.
2. 제출된 서류(전형료 포함)는 일체 반환하지 않으며, 입학원서 접수(전형료 결제) 후에는 작성(입력)사항을 변경 및 취소할 수 없으므로 모집요강을 정확히 숙지하고 전형료 결제 전에 입력한 내용을 반드시 확인하여야 함.
3. 입학원서 접수의 효력은 지정된 입학원서 접수사이트에 접속하여 전형료 결제 후 수험번호 부여와 동시에 발생하며, 수험생은 수험표를 출력하여 시험 당일 반드시 수험표와 신분증[여권, 주민(외국인)등록증]을 함께 지참하고 응시하여야 함.
4. 입학원서 접수 시 오기 또는 누락 등이 없도록 각별히 유의하여 작성(입력)하여야 하고, 작성사항 중 입력착오(누락) 등으로 발생하는 모든 문제는 수험생 본인의 책임이며 대학에서 책임지지 않음.
5. 원서접수를 완료한 자 중 최종 합격자 발표일 1주일 전까지 어학성적표를 추가 제출할 경우 해당 어학성적에 해당하는 장학금을 지급함
6. 수험표 분실 시 대학 입학안내 홈페이지에서 재 출력하여야 함.
7. 입학원서에 작성(입력)된 연락처가 전형기간 중 변경될 경우 즉시 죽전캠퍼스 국제처 국제교육1팀으로 변경, 통보하여야 하며, 입학원서에 기재된 연락처의 오류 또는 연락이 되지 않아 발생하는 모든 불이익(합격취소 등)에 대한 책임은 수험생 본인에게 있음.
8. 수학이 불가능한 유전성 질환이나 선천성 질병이 있는 자 또는 제3자의 지속적 도움 없이 수업(실험, 실습 등)이 불가능한 자는 지원할 수 없음.
9. 기타 자세한 사항은 입학원서 접수사이트의 안내사항 참조.

서류제출

1. 모든 서류는 원서접수 개시일 기준 6개월 이내에 발급한 것만 인정함.(단, 잔고증명서의 경우 아래 기준을 따름.)
2. 잔고증명서의 경우 원서접수 개시일로부터 30일 이내에 발급된 것만 인정하나, 잔고증명서 상에 유효기간이 있는 경우 유효기간까지 유효한 잔고증명서로 인정함.(단, 발급일로부터 최대 6개월까지만 인정.)
3. 입학원서 및 제출서류의 기재사항이 허위로 판명되거나, 기타 부정행위(제출서류 위·변조, 대리시험 등)방법으로 합격 또는 입학한 사실이 확인될 경우 또는 졸업(수료)예정자가 해당년도에 졸업(수료)을 하지 못한 경우에는 입학한 후라도 합격 또는 입학을 취소함.
4. 최종합격(입학)된 자라도 법무부 출입국관리사무소 또는 재외공관에서 사증발급이 불허된 경우 합격(입학)이 취소되며 사증 불허에 대한 책임은 전적으로 학생 본인에게 있음.
5. 입학생은 대학에서 학력조사와 관련하여 협조 요청 시 적극 협조하여야 함.

전형관련

1. 모집요강에 명시되지 않은 사항은 신입생 선발 사정원칙에 따라 처리하며, 입학시험 성적은 일체 공개하지 않음.
2. 온라인 한국어시험은 Skype로 진행함.
3. 시험 당일 Skype 연결을 위한 전자기기(컴퓨터, 휴대전화 등)를 제외한 무선통신기기 및 전자기기 일체를 소지하고 시험장에 입실할 수 없으며 이를 위반하였을 경우에는 부정행위자로 간주하여 사정대상에서 제외함.
4. 시험 당일 수험표와 신분증[여권, 주민(외국인)등록증]을 반드시 지참하여야 함.

K-LEAP 교육과정

1. 신입학(한국어트랙) 지원자 중 TOPIK 4급 이상 미취득자 전원은 한국어 구사능력 향상을 위해 입학 후 2개 학기 동안 K-LEAP 교과목을 이수해야 함.
2. 1학기에는 K-LEAP 7과목(18학점)을 수강하며, 2학기에는 K-LEAP 3과목(7학점)과 소속 학과의 전공과목 또는 교양과목을 수강함.
3. K-LEAP 과목은 공통교양 과목으로 대체 인정됨.
4. 편입학 지원자, 영어트랙 해당 없음.

합격통지 및 등록관련

1. 합격자 발표는 본교 입학 홈페이지(<http://ipsi.dankook.ac.kr>) 를 통해서만 진행되며, 개별 통보는 하지 않음. 단국대 홈페이지→입학안내→학부입학 바로가기→죽전/천안 캠퍼스 바로가기→합격자조회
2. 합격자는 공지되는 “합격자 안내문”을 반드시 숙지하여야 함.
3. 모든 공지는 본교 입학 홈페이지를 통해서 안내함.(<http://ipsi.dankook.ac.kr>)
4. 등록금 납부는 한화(KRW)로만 가능함.
5. 전적대학에서 재학 또는 휴학 중인 상태에서 우리 대학 편입학 전형에 등록한 자는 2024. 2. 29(목)까지 전적대학에서 제적 처리가 완료되어야 함(단국대 출신자 포함)

졸업요건

1. 입학 후 졸업 직전학기까지 TOPIK 4급 이상 증빙서류를 제출하여야만 졸업할 수 있음 (영어트랙 해당 없음)
2. 편입생 : 전적대학 전공 및 이수한 교과목에 따라 본교의 인정학점이 결정되며, 인정학점 부족 시 정규학기 이내에 졸업요구학점 취득이 어려울 수 있음

정규과정 학점 제한(영어트랙 해당 없음)

- 대상 : 해당국 정부지원 장학생, 자매결연대학 총(학)장 추천자
- TOPIK 3급 이상 : 제한 없음**
- TOPIK 2급 : 학기당 정규학점 12학점까지 신청 가능**
- TOPIK 1급 : 학기당 정규학점 6학점까지 신청 가능**
- 입학 후 상위등급 TOPIK 성적표 제출 시 다음학기부터 해당 급수의 학점 신청기준을 적용함
- 본교 온라인 한국어시험 합격자 학점 제한 없음

기타

1. 부모 모두 외국인인 외국인 특별전형에 최종 합격한 외국인유학생 전원은 『**국민건강보험법 시행규칙**』에 따라 **지역가입자로 당연 가입됨.**
2. 본 모집요강의 모든 사항은 지원자에게 별도로 공지하지 않으므로 내용을 정확하게 숙지하기 바라며, 미숙지로 인해 발생 되는 모든 불이익에 대한 책임은 수험생 본인에게 있음.
3. 입학 후 모든 사항은 우리 대학 학칙에 따름.

08 장학금 및 등록금 안내

신·편입생 장학금

<한국어트랙>

| 구분 | 장학금 | |
|--|--|--------------------------|
| TOPIK 6급 취득자 | 수업료의 60%(4년), 생활관비(4년) 단, 재학 시 직전학기 평균평점 3.7이상인 자 | |
| TOPIK 4급, 5급 취득자 | 수업료의 50%(1학기), 생활관비(1학기) | |
| TOPIK 3급 취득자 | 수업료의 30%(1학기), 생활관비(1학기) | |
| 온라인 한국어시험 합격자 | 우리 대학교 어학원 출신자(6개월 과정 이상) | 수업료의 20%(1학기), 생활관비(1학기) |
| | 우리 대학교 어학원 출신자(6개월 과정 이상) 외 | 수업료의 15%(1학기), 생활관비(1학기) |
| 편입학 지원자 중 단국대학교 글로벌교육센터 어학연수과정 3단계 이상 이수자(또는 단국대학교 글로벌교육센터 어학연수과정 4단계 이상 성적증명서 제출 가능자) | 우리 대학교 어학원 출신자(6개월 과정 이상) | 수업료의 20%(1학기), 생활관비(1학기) |
| | 우리 대학교 어학원 출신자(6개월 과정 이상) 외 | 수업료의 15%(1학기), 생활관비(1학기) |

- 영어트랙 해당 없음.
- 해당국 정부지원 장학생은 본교 장학금 지급대상에서 제외됨.
- 장학금 지급기준 및 지급액은 본교 장학제도에 따라 변동될 수 있음.
- 생활관비 장학금은 4인실 입사자에 한하여 지급함.
- 2인실은 여석에 한하여 입사 가능하며, 생활관비는 본인 부담임.

<영어트랙 : 글로벌경영학과>

| 장학기준 | 장학금 |
|--|--|
| TOEFL Score iBT 71 이상 또는 IELTS 5.5 이상 소지자 | → 수업료 30% 면제(4년) → 재학생장학금 : 직전학기 성적 3.0 이상 취득자에 한함 → 입학 후 3학기 연속 이수하여야 장학금 지급 가능 |
| TOEFL Score iBT 80 이상 또는 IELTS 6.5 이상 소지자 | → 수업료 50% 면제(4년) → 재학생장학금 : 직전학기 성적 3.1 이상 취득자에 한함 → 입학 후 3학기 연속 이수하여야 장학금 지급 가능 |
| TOEFL Score iBT 112 이상 또는 IELTS 7.5 이상 소지자 | → 수업료 75% 면제(4년) → 재학생장학금 : 직전학기 성적 3.3 이상 취득자에 한함 → 입학 후 3학기 연속 이수하여야 장학금 지급 가능 |
| TOEFL Score iBT 115 이상 또는 IELTS 8.5 이상 소지자 | → 수업료 전액 면제(4년) → 기숙사비 면제(4년) → 재학생장학금 : 직전학기 성적 3.5 이상 취득자에 한함 → 입학 후 3학기 연속 이수하여야 장학금 지급 가능 |

- 해당국 정부지원 장학생은 본교 장학금 지급대상에서 제외됨.
- 장학금 지급기준 및 지급액은 본교 장학제도에 따라 변동될 수 있음.
- 생활관비 장학금은 4인실 입사자에 한하여 지급함.
- 2인실은 여석에 한하여 입사 가능하며, 생활관비는 본인 부담임.

<영어트랙 : 모바일시스템공학과>

| 장학기준 | 장학금 |
|--|--|
| TOEFL Score iBT 80 이상 또는 IELTS 6.5 이상 소지자 | → 수업료 50% 면제(4년) → 재학생장학금 : 직전학기 성적 3.1 이상 취득자에 한함 → 입학 후 3학기 연속 이수하여야 장학금 지급 가능 |
| TOEFL Score iBT 112 이상 또는 IELTS 7.5 이상 소지자 | → 수업료 75% 면제(4년) → 재학생장학금 : 직전학기 성적 3.3 이상 취득자에 한함 → 입학 후 3학기 연속 이수하여야 장학금 지급 가능 |
| TOEFL Score iBT 115 이상 또는 IELTS 8.5 이상 소지자 | → 수업료 전액 면제(4년) → 기숙사비 면제(4년) → 재학생장학금 : 직전학기 성적 3.5 이상 취득자에 한함 → 입학 후 3학기 연속 이수하여야 장학금 지급 가능 |

- 해당국 정부지원 장학생은 본교 장학금 지급대상에서 제외됨.
- 장학금 지급기준 및 지급액은 본교 장학제도에 따라 변동될 수 있음.
- 생활관비 장학금은 4인실 입사자에 한하여 지급함.
- 2인실은 여석에 한하여 입사 가능하며, 생활관비는 본인 부담임.

재학생 장학금(영어트랙 해당 없음)

| 구분 | TOPIK | | | 비고 | |
|----------------------|------------------|------------------|------------------|------------------|--|
| | 미소지 및 2급 이하 | 3급 1~2학년 | 3~4학년 | | 4급 이상 |
| 직전학기 최고점 학생 | - | - | - | 수업료 전액, 생활관비 | ※ 생활지원비(생활관비의 80%) 지급은 입학 후 1년 경과 뒤 적용함. |
| 직전학기 평점 4.0이상 | 수업료 20%, 생활관비 | 수업료 50%, 생활관비 | 수업료 20%, 생활관비 | 수업료 60%, 생활관비 | ※ 단, 개인사정에 의한 미입사자는 지급불가 |
| 직전학기 평점 3.5 ~ 4.0 | 수업료 15%, 생활관비 | 수업료 40%, 생활관비 | 수업료 15%, 생활관비 | 수업료 50%, 생활관비 | ※ 생활관 입사 제한자는 생활관비 또는 생활지원비 지급 불가 |
| 직전학기 평점 3.0 ~ 3.5 | 수업료 10%, 생활관비 | 수업료 30%, 생활관비 | 수업료 10%, 생활관비 | 수업료 40%, 생활관비 | |
| 직전학기 평점 2.5 ~ 3.0 | - | 생활관비 | - | 수업료 30%, 생활관비 | |

- 직전학기 최고점 학생은 직전학기 평점 4.0 이상 중 최고점자를 선발함.(각 학년 1명, TOPIK 4급 이상 취득자에 한함.)
- 해당국 정부지원 장학생은 본교 장학금 지급대상에서 제외됨.
- 장학금 지급기준 및 지급액은 본교 장학제도에 따라 변동될 수 있음.
- 생활관비 장학금은 4인실 입사자에 한하여 지급함.
- 2인실은 여석에 한하여 입사 가능하며, 생활관비는 본인 부담임.

09 생활관 안내

TOPIK 지원금

| 구분 | 지원금 |
|----------------------|----------|
| 1학년 중 TOPIK 시험 응시자 | 응시로 지원 |
| 1학년 중 4급 이상 신규 취득자 | 500,000원 |
| 2~3학년 중 4급 이상 신규 취득자 | 300,000원 |

→ TOPIK 지원금과 응시로 지원 중복 수혜 불가.

등록금(2023년 기준이며, 등록금은 매년 변경될 수 있음)

| 등록금 계열 | 모집단위 | 수업료 (입학실비용) | 수업료 |
|-------------|--|----------------|-------------|
| 인문사회 | 죽전 : 문과대학, 법과대학, 사회과학대학(미디어커뮤니케이션학부 제외), 경영경제대학(국제학부 제외) | 180,000원 | 4,031,000원 |
| | 천안 : 외국어대학, 공공·보건과학대학(공공정책학과, 사회복지학과, 환경자원경제학과, 보건행정학과), 예술대학(문예창작과) | | |
| 이학 | 죽전 : 사회과학대학(미디어커뮤니케이션학부), SW융합대학(정보통계학과) | | 4,756,000원 |
| | 천안 : 과학기술대학(수학과) | | |
| 체육 | 천안 : 스포츠과학대학 | | 4,881,000원 |
| 공학 | 죽전 : 공과대학, SW융합대학(소프트웨어학과, 컴퓨터공학과) | | 5,308,000원 |
| | 천안 : 과학기술대학(수학과), 생명공학대학 | | |
| 예능 | 죽전 : 음악·예술대학 | | 5,530,000원 |
| | 천안 : 예술대학(문예창작과 제외) | | |
| 국제학부(인문사회) | 죽전 : 경영경제대학(국제학부) | | 6,076,000원 |
| 국제학부(공학) | 죽전 : SW융합대학(모바일시스템공학과) | | 6,479,000원 |
| 의치(사우디정부지원) | 천안 : 의과대학 | | 21,820,000원 |
| 보건 | 천안 : 공공·보건과학대학(임상병리학과, 물리치료학과, 심리치료학과) | | 4,820,000원 |



시설 규모

1. 죽전캠퍼스 :

| 구분 | 호실현황 | 수용인원 |
|-----|-------------------|--------|
| 집현재 | 2인실 19실, 4인실 102실 | 446명 |
| 웅비홀 | 1인실 6실, 2인실 534실 | 1,074명 |
| 진리관 | 2인실 3실, 4인실 229실 | 922명 |

문의처 : 생활관 관리팀 (☎ 031-8005-2906~7, 홈페이지 domi.dankook.ac.kr)

2. 천안캠퍼스 :

| 구분 | 호실현황 | 수용인원 |
|-----|------------------|--------|
| 단우홀 | 1인실 6실, 2인실 504실 | 1,014명 |
| 봉사관 | 2인실 2실, 4인실 230실 | 924명 |

문의처 : 생활관 관리팀 (☎ 041-550-1162~4, 홈페이지 chdomi.dankook.ac.kr)

이용 금액(2023학년도 2학기 기준)

1. 집현재(죽전캠퍼스)

| 입사유형 | 생활관비(원) | 보증금(원) | 납입금액(원) | 비고 | |
|--------------|---------|-----------|---------|-----------|-----------|
| 반기 (176일) | 2인1실 | 2,077,400 | - | 2,077,400 | 6일분 감면 혜택 |
| | 4인1실 | 1,271,600 | | 1,271,600 | |

2. 진리관(죽전캠퍼스)

| 입사유형 | 생활관비(원) | 보증금(원) | 납입금액(원) | 비고 | |
|----------|---------|-----------|---------|-----------|-----------|
| 반기(176일) | 4인1실 | 1,371,900 | 100,000 | 1,471,900 | 6일분 감면 혜택 |

3. 봉사관(천안캠퍼스)

| 입사유형 | 생활관비(원) | 보증금(원) | 납입금액(원) | 비고 | |
|----------|---------|-----------|---------|-----------|-----------|
| 반기(176일) | 4인1실 | 1,371,900 | 100,000 | 1,471,900 | 6일분 감면 혜택 |

- 신입생 및 재학생 장학금 지급 기준에 따라 생활관비(4인 1실) 전체 또는 일부를 장학금으로 받을 수 있음.
- 생활관비는 2023학년도 2학기 기준이며, 2024학년도 1학기 생활관비는 변동될 수 있음.
- 기숙사 입사희망자는 서류 제출 시 기숙사 입사신청서를 제출하여야 하며, 「**미제출시 입사의사가 없는 것으로 간주함**」.

10 비자관련 안내

→ 합격 후 VISA 신청(또는 자격변경) 시 재외공관(또는 출입국외국인청)의 규정에 따라 학력인증서류, 잔고증명서 등의 서류를 제출할 수 있으니 별도로 준비하기 바람.

D-4비자 소지자

- 본교의 입시기간 중에 D-4비자 체류기간이 만료되는 학생은 어학연수과정을 추가로 등록하여 체류기간을 연장해야 함.

- D-2비자 변경을 위한 자격변경 서류는 2024년 2월초 제출 예정.

→ 서류 준비

1. 신청서(사진부착), 외국인등록증(D-4)
2. 수입인지 10만원, 등록증 발급 수수료 3만원(현금)
3. 여권사본
4. 표준입학허가서
5. 등록금 납입 영수증
6. 최종학력서류
7. 어학연수과정 출석증명서
8. 재정인증서류(국내은행 발행 본인명의 잔고증명서)
9. 체류지서류

→ D-4비자를 소지하고 있는 학생들은 D-2 자격변경 완료 전 출국불가.

국외체류자 (D-2비자 신규신청)

- 국제처에서 표준입학허가서 및 단국대학교 사업자등록증 사본 E-mail 발송.

- 현지 재외공관(한국영사관)을 통해 비자 신청.

→ 서류 준비

1. 신청서(사진부착)
2. 여권사본
3. 단국대학교 사업자등록증
4. 표준입학허가서
5. 최종학력 입증서류
6. 재정능력 입증서류

→ 구비서류는 일부 상이할 수 있으므로 반드시 현지 재외공관(한국영사관)을 통해 확인 바람.



죽전캠퍼스



천안캠퍼스

目录

| | |
|-------------|--------|
| 1. 招生日程 | ... 40 |
| 2. 招生专业 | ... 41 |
| 3. 报名资格 | ... 45 |
| 4. 审核方法 | ... 46 |
| 5. 报名指南 | ... 48 |
| 6. 提交材料 | ... 49 |
| 7. 报名须知 | ... 52 |
| 8. 奖学金及学费指南 | ... 54 |
| 9. 宿舍指南 | ... 57 |
| 10. 签证指南 | ... 59 |
| 11. 校区地图 | ... 82 |
| <资料参考模版> | |
| - 学历调查同意书 | ... 88 |
| - 财政担保书 | ... 89 |
| - 自我介绍书 | ... 90 |
| - 宿舍申请书 | ... 92 |
| - 学校信息确认书 | ... 93 |
| - 翻译人确认书 | ... 94 |



*本中文招生简章基于韩文版本翻译而成,若内容产生歧义时,一切以韩文原版为准。

入学一览



01 招生日程

| 区分 | 日程 | 注意事项 |
|------------|------------------------------------|--|
| 网上报名 | 2023. 10. 2(一) 10:00 ~ 20(五) 17:00 | 仅进行网上报名: www.jinhakapply.com |
| 提交材料截止日期 | 2023. 10. 26(四)前截止 | 申请者须将报名成功后,网站上所提供的“材料发送信封专用标贴”打印并粘贴于材料文件袋上,用挂号邮件方式提交。规定期限内材料未能到达时,将不予接受,请谅解。 |
| 线上韩语考试 | 2023. 11. 4(六) 10:00 ~ | 1. 仅未取得TOPIK3级及以上的大一申请者可参加线上韩语校考。(除英语授课) 2. 有关学校线上韩语考试的事项将在测试前5天在本校入学官方主页上(http://ipsi.dankook.ac.kr)公告。 3. 考试当天务必携带准考证与身份证件(护照或外国人登记证)。 |
| 公布线上韩语考试结果 | 2023. 11. 9(四) 14:00 | 公布于我校入学指南网站上(http://ipsi.dankook.ac.kr)(不进行个别通知) |
| 公布最终合格者名单 | 2023. 11. 24(五) 14:00 | 公布于我校入学指南网站上(http://ipsi.dankook.ac.kr)(不进行个别通知) |
| 缴纳学费 | 2024. 1. 10(三) 9:00 ~ 19(五) 16:00 | 1. 录取者须在我校入学指南网站上将录取通知书与学费缴纳通知书打印之后,将学费缴纳于指定银行(也可以通过网络银行或手机银行缴纳)。 2. 如不能在规定期间内缴纳学费,取消录取资格。 3. 有关学费的缴纳,请参考我校入学网站的“录取者注册指南” |
| 发放标准入学许可书 | 2024. 1. 22(一) ~ | 发放处: 国际处国际教育1组(国际馆317室) |

→ 根据实际状况上述日程可能有所变动,入学指南将提前在学校官网公布。

02 招生专业

竹田校区

| 校区 | 学科 | 院系 | 招生专业 | 插班 | | | | |
|--------------------|-----------|-------------------------------|------------------------------|--------------------|--------|----|---|---|
| | | | | 新生 | 大二 | 大三 | | |
| 竹田 | 人文 | 文学院 | 国语文系 | ○ | ○ | ○ | | |
| | | | 史学系 | ○ | ○ | ○ | | |
| | | | 哲学系 | ○ | ○ | ○ | | |
| | | | 英美人文学系 | ○ | ○ | ○ | | |
| | | | 法学院 | 法学系 | ○ | ○ | ○ | |
| | | | | 社会科学学院 | 政治外交学系 | ○ | ○ | ○ |
| | | | | | 行政学系 | ○ | ○ | ○ |
| | | | 城市规划房地产学部 [城市区域规划学] [房地产学] | ○ | ○ | ○ | | |
| | | | 媒体与传播学部 [新闻报刊] [视频内容] [广告宣传] | ○ | ○ | X | | |
| | | | 大众传媒学部 [新闻报刊] [视频内容] [广告宣传] | X | X | ○ | | |
| | | 咨询学系 | ○ | ○ | ○ | | | |
| | | 经营经济学院 | 经济学系 | ○ | ○ | ○ | | |
| | | | 贸易学系 | ○ | ○ | ○ | | |
| | | | 经营学部 [经营学] [会计学] | ○ | ○ | ○ | | |
| | | | 国际经营系 | ○ | X | X | | |
| | | | 国际学部 - 国际商务专业 | X | ○ | ○ | | |
| | | 自然 | 工学院 | 电子电气工学系 | ○ | X | X | |
| | | | | 融合半导体工程系 | ○ | X | X | |
| | | | | 电子电气工学部 - 电子电气工程专业 | X | ○ | X | |
| | | | | 融合半导体工程专业 | X | ○ | X | |
| 电子电气工学部 - [电子电气工学] | X | | | X | ○ | | | |
| [融合半导体工学] | X | | | X | ○ | | | |
| 高分子系统工学部 - 高分子工学专业 | ○ | | | ○ | ○ | | | |
| 纤维融合材料工学专业 | ○ | | | ○ | ○ | | | |
| 土木环境工学系 | ○ | | | ○ | ○ | | | |
| 机械工学系 | ○ | | | ○ | ○ | | | |
| 化学工学系 | ○ | | | ○ | ○ | | | |
| 建筑学部 - 建筑学专业(5年制) | ○ | | | ○ | ○ | | | |
| 建筑工学专业 | ○ | | | ○ | ○ | | | |
| 软件融合学院 | 软件学系 | | | ○ | ○ | ○ | | |
| | 计算机工学系 | | | ○ | ○ | ○ | | |
| | 移动通信系统工学系 | ○ | ○ | ○ | | | | |
| | 统计信息科学系 | ○ | X | X | | | | |
| | 信息统计学系 | X | ○ | ○ | | | | |
| 艺能 | 音乐·艺术学院 | 陶艺系* | ○ | ○ | ○ | | | |
| | | 设计学部* - 视觉传达设计专业 | ○ | ○ | ○ | | | |
| | | 服装产业设计专业 | ○ | ○ | ○ | | | |
| | | 公演电影学部* - 电影专业 - 理论·演出·幕后工作人员 | ○ | ○ | ○ | | | |
| | | 话剧专业 - 演出 | ○ | ○ | ○ | | | |
| | | 话剧专业 - 演技 | ○ | ○ | ○ | | | |
| | | 音乐剧专业 - 演技 | ○ | ○ | ○ | | | |

| 校区 | 学科 | 院系 | 招生专业 | 新生 | 插班 | |
|----|----|---------|-------------------|----|----|----|
| | | | | | 大二 | 大三 |
| 竹田 | 艺能 | 音乐·艺术学院 | 舞蹈系* - 韩国传统舞 | ○ | ○ | ○ |
| | | | 芭蕾舞 | ○ | ○ | ○ |
| | | | 现代舞 | ○ | ○ | ○ |
| | | | 音乐学部* - 钢琴专业 | ○ | ○ | ○ |
| | | | 管弦乐专业 - 弦乐 - 小提琴 | ○ | ○ | ○ |
| | | | 中提琴 | ○ | ○ | ○ |
| | | | 大提琴 | ○ | ○ | ○ |
| | | | 低音提琴 | ○ | ○ | ○ |
| | | | 管乐(木管) - 长笛 | ○ | ○ | ○ |
| | | | 双簧管 | ○ | ○ | ○ |
| | | | 单簧管 | ○ | ○ | ○ |
| | | | 巴松 | ○ | ○ | ○ |
| | | | 管乐(铜管) - 圆号 | ○ | ○ | ○ |
| | | | 小号 | ○ | ○ | ○ |
| | | | 次中音长号 | ○ | ○ | ○ |
| | | | 低音长号 | ○ | ○ | ○ |
| | | | 大号 | ○ | ○ | ○ |
| | | | 打击乐 | ○ | ○ | ○ |
| | | | 声乐专业 | ○ | ○ | ○ |
| | | | 作曲专业(古典) | ○ | ○ | ○ |
| | | | 国乐专业 - 器乐(管乐) - 笛 | ○ | ○ | ○ |
| | | | 大琴 | ○ | ○ | ○ |
| | | | 奚琴 | ○ | ○ | ○ |
| | | | 牙箏 | ○ | ○ | ○ |
| | | | 小金·短箫 | ○ | ○ | ○ |
| | | | 器乐(弦乐) - 玄琴 | ○ | ○ | ○ |
| | | | 伽倻琴 | ○ | ○ | ○ |
| | | | 器乐(打击乐) - 杖鼓·锣 | ○ | ○ | ○ |
| | | | 声乐 - 正歌 | ○ | ○ | ○ |
| | | | 韩国清唱 | ○ | ○ | ○ |
| | | | 京西道唱 | ○ | ○ | ○ |
| 理论 | ○ | ○ | ○ | | | |
| 作曲 | ○ | ○ | ○ | | | |

天安校区

| 校区 | 学科 | 院系 | 招生专业 | 新生 | 插班 | | | |
|--------------------|-------------------|---------------------|-----------------|--------|------|----|---|---|
| | | | | | 大二 | 大三 | | |
| 天安 | 人文 | 外国语学院 | 亚洲中东部部 - 中国学专业 | ○ | ○ | ○ | | |
| | | | 日本学专业 | ○ | ○ | ○ | | |
| | | | 蒙古学专业 | ○ | ○ | ○ | | |
| | | | 中东学专业 | ○ | ○ | ○ | | |
| | | | 越南学专业 | ○ | ○ | ○ | | |
| | | | 欧洲中南美学部 - 德国学专业 | ○ | ○ | ○ | | |
| | | | 法国学专业 | ○ | ○ | ○ | | |
| | | | 西班牙中南美学专业 | ○ | ○ | ○ | | |
| | | | 俄罗斯学专业 | ○ | ○ | ○ | | |
| | | | 葡萄牙巴西学专业 | ○ | ○ | ○ | | |
| | | | 英语系 | ○ | ○ | ○ | | |
| | | | 国际韩语系 | ○ | ○ | ○ | | |
| | | | 自然 | 科学技术学院 | 数学系 | ○ | ○ | ○ |
| | | | | | 物理学系 | ○ | ○ | ○ |
| | 化学系 | ○ | | | ○ | ○ | | |
| | 食品营养学系 | ○ | | | ○ | ○ | | |
| | 生命科学部 - 生命科学专业 | X | | | ○ | ○ | | |
| | 微生物学专业 | X | | | ○ | ○ | | |
| | 新材料工学系 | ○ | | | ○ | ○ | | |
| | 食品工学系 | X | | | ○ | ○ | | |
| | 能源工学系 | ○ | | | ○ | ○ | | |
| | 经营工学系 | ○ | | | ○ | ○ | | |
| | 生物融合学院 | 生命资源学部 - 食品生命工学专业 | | | ○ | X | X | |
| | 动物生命工学专业 | ○ | | | X | X | | |
| | 环境园艺学专业 | ○ | | | X | X | | |
| | 绿植造景学专业 | ○ | | | X | X | | |
| | 生物医学科学学部 - 生命科学专业 | ○ | | | X | X | | |
| | 微生物学专业 | ○ | | | X | X | | |
| | 食品工学系 | ○ | | | X | X | | |
| | 生命工学院 | 生命资源学部 - 粮食生命工学专业 | X | ○ | ○ | | | |
| | 动物生命工学专业 | X | ○ | X | | | | |
| 动物资源学专业 | X | X | ○ | | | | | |
| 环境园艺造景学部 - 环境园艺学专业 | X | ○ | ○ | | | | | |
| 绿地造景学专业 | X | ○ | ○ | | | | | |
| 艺能 | 艺术学院 | 美术学部* - 工艺(金属·纤维)专业 | ○ | ○ | ○ | | | |
| | | 东洋画专业 | ○ | ○ | ○ | | | |
| | | 西洋画专业 | ○ | ○ | ○ | | | |
| | | 雕塑专业 | ○ | ○ | ○ | | | |
| | | 文艺创作系 | ○ | ○ | ○ | | | |
| | | 新潮音乐学部* - 音乐技巧专业 | ○ | X | X | | | |
| | | 爵士表演专业 | ○ | X | X | | | |
| | | 唱作人专业 | ○ | X | X | | | |
| | | 新潮音乐系* - 音响工程师 | X | ○ | ○ | | | |
| | | 音乐技巧&计算机音乐作曲 | X | ○ | ○ | | | |
| | | 爵士钢琴 | X | ○ | ○ | | | |
| | | 爵士贝斯 | X | ○ | ○ | | | |
| | | 爵士鼓 | X | ○ | ○ | | | |

03 报名资格

| 校区 | 学科 | 院系 | 招生专业 | 插班 | | |
|--------|----|--------|-------------------|----|----|----|
| | | | | 新生 | 大二 | 大三 |
| 天安 | 艺能 | 艺术学院 | 新潮音乐系* - 爵士吉他/管弦乐 | X | ○ | ○ |
| | | | 唱作人 | X | ○ | ○ |
| | 体育 | 体育学院 | 生活体育学系 | ○ | ○ | ○ |
| | | | 体育经营学系 | ○ | ○ | ○ |
| | | | 国际体育学部 - 运动处方康复专业 | ○ | ○ | ○ |
| | | | 国际体育专业 跆拳道专业 | ○ | ○ | ○ |
| | 医学 | 医学院 | 医学预科(仅沙特政府奖学金生) | ○ | X | X |
| | 人文 | 公共人才学院 | 公共政策学系 | ○ | X | X |
| | | | 社会福利学系 | ○ | X | X |
| | | | 食品资源经济学系 | ○ | X | X |
| | 人文 | 保健科学学院 | 保健行政学系 | ○ | X | X |
| | | | 临床病理学系 | ○ | X | X |
| | 自然 | | 物理治疗学系 | ○ | X | X |
| | | | 心理治疗学系 | ○ | X | X |
| | | | 公共保健学院 | X | ○ | ○ |
| | 人文 | | 公共政策学系 | X | ○ | ○ |
| | | | 社会福利学系 | X | ○ | ○ |
| | | | 环境资源经济学系 | X | ○ | ○ |
| | | | 保健行政学系 | X | ○ | ○ |
| | 自然 | | 临床病理学系 | X | ○ | ○ |
| | | | 物理治疗学系 | X | ○ | ○ |
| 心理治疗学系 | | | X | ○ | ○ | |

注意事项

- “*” 标识的专业需提交实技考核材料(视频或作品集)
- 根据大学教育编制的结果, 2024学年招生专业可能会有所变动。
- 招生专业栏目里, 括号 “[]” 是表示第二学年时需要选择细分方向的专业。
- 师范学院不招外国留学生。
- 由于需要取得建筑学教育认证(KAAB), 建筑学系(5年制)学生须修习“建筑学专门教育课程”, 工科学院(建筑学专业除外) 的新生由于需要取得工学教育认证(ABEEK), 须修习“工学专门教育课程”(请咨询后再申请本专业)。
- 报名国乐专业的学生请提前与国际处国际教育1组联系, 确认细分专业。

综合事项

| 区分 | 报名资格 | 注意事项 |
|-----|---|---|
| 新生 | 父母均为外国国籍, 完成小学, 初中, 高中十二年全部教育课程, 韩国国内外高中毕业(或即将毕业)者。 | → 不可同时申请竹田校区与天安校区。 |
| 插班生 | 2年级插班 - 父母均为外国国籍的外国学生 - 韩国国内正式4年制大学里, 已经完成(或即将完成)1年(2个学期)并且已获得(或即将获得)学分在33分以上者 - 国外正式4年制大学里完成(或即将完成)1年(2个学期), 并且取得了获得学士学位所需基本学分的1/4以上者 - 国内外正式大专校毕业(或即将毕业)者 | → 多种国籍者及无国籍者不可申请。 → 所属国家法律规定正规学历认证的学校毕业生才有资格申请。 → 自学考试、家庭教学, 成人教育, 高等教育自学考试录取者不可申请。 |
| | 3年级插班 - 父母均为外国国籍的外国学生 - 韩国国内正式4年制大学里, 已经完成(或即将完成)2年4个学期 并且已获得(或即将获得)学分在65分以上者 - 国外正式4年制大学里完成(或即将完成)2年(4个学期), 并且取得了获得学士学位所需基本学分的1/2以上者 - 国内外正式大专校毕业(或即将毕业)者 | |

→ 插班生的学分认证方式: 本校是根据前身大学的专业和已修科目来决定认证学分的, 所得认证学分不足的情况下, 可能无法在正规学期内按时毕业。

语言标准

| 区分 | 学系 | 报名资格 |
|--------------|--------------------|---|
| 韩语授课(大一新生) | 所有学科 | TOPIK3级以上成绩持有者和未持有者可参加学校线上韩语考试 |
| 韩语授课(插班生) | 所有学科 | 取得TOPIK3级及以上 或 檀国大学国际教育中心韩语研修3阶段及以上已修者(包含可提交檀国大学国际教育中心韩语研修4阶段及以上成绩证书的申请者) |
| 英语授课(新生&插班生) | 经营经济学院 全球化经营学科 | TOEFL iBT 71 以上 或者 IELTS 5.5 以上 |
| | 软件融合学院 移动通讯系统工学 | TOEFL iBT 80 以上 或者 IELTS 6.5 以上 |

- 只承认以报名开始日为基准, 有效期内的语言成绩单。(但, 报名期间内公布的成绩也可以)
- 插班生如在最终合格者发表前预计可以达到TOPIK3级及以上的话, 可以申请。(但是, 必须在成绩发表后提交TOPIK3级及以上的成绩单, 未提交则视为不合格处理)

其他报名资格

| 申请类别 | 对象 | 报名资格 |
|------|--------------------------|----------------------------------|
| 新入生 | 获得国家政府奖学生、姊妹学校校长(院长)推荐者 | 韩语水平考试TOPIK 1级以上也可申请(无需进行线上韩语考试) |
| 插班生 | 天安校区艺能, 体育领域申请者(新潮音乐系除外) | 在之前的大学里修习过相同专业 |

→ 出身学校在本国无法被认证为正规4年制大学的学生, 不可申请插班。

04 审查方法

审查项目及所占比率

| 区分 | TOPIK | 阶段 | 审查项目及所占比率 (%) | | 备注 |
|----------------------|--------------------------|------|---------------|-----------|--|
| | | | 线上韩语考试 | 材料和实技审查 | |
| 韩语授课 (大一 新生) | 取得 TOPIK3 级以上 成绩者 | 1 阶段 | 通过 | - | |
| | | 2 阶段 | - | 100%(P/F) | |
| | 未取得 TOPIK3 级 以上成绩者 | 1 阶段 | 100%(P/F) | - | → 线上韩语考试:根据韩语水平考试(TOPIK)水平, 在线进行口语考试 → 合格标准:取得60分以上(满分为100分) |
| | | 2 阶段 | - | 100%(P/F) | → 免试对象:国家奖学生,姊妹大学校(院)长推荐 者中具备韩国语能力考试(TOPIK) 1级以上持有者 |
| 韩语授课 (插班生) | - | 1 阶段 | 通过 | - | |
| | - | 2 阶段 | - | 100%(P/F) | |
| 英语授课 (新生& 插班生) | - | 1 阶段 | 通过 | - | → 满足于英语授课语言标准的学生,不必参加 其他程序,就看所提交的资料而录取。 |
| | | 2 阶段 | - | 100%(P/F) | |

→ 实技审查仅限艺能领域学科(艺术大学文艺创作专业除外)

→ 未取得TOPIK3级以上成绩者,一轮审核需先参加线上韩语考试。二轮审核时,学校仅对一轮考试通过者进行材料审核。

实技审查具体事项

| 区分 | 具体事项 | | | | | | | | | | | | | | |
|---|---|------|------|----------------------|--------------|-----------------------|---------------|----------|----------------|---------------------|-----------------------|---|--------|-------------|----------|
| 提交对象 | 艺能领域学科申请者(艺术大学文艺创作专业除外) | | | | | | | | | | | | | | |
| 评价方式 | 作品集评价 | | | | | | | | | | | | | | |
| 评价材料 | 视频(USB)或作品集(实物或USB) | | | | | | | | | | | | | | |
| 提交材料 | 自由形式提交本人申请的学科相关联的专业成果(作品集, 作品照片, 演奏或表演的视频等) - 实物要求: A4尺寸 - 文件要求: PDF或视频储存在USB中 - 提交的视频, 须在开始的时候展示本人的面部和准考证的特写 - 各学科具体要求 | | | | | | | | | | | | | | |
| | <table border="1"> <thead> <tr> <th>招生学科</th> <th>具体要求</th> </tr> </thead> <tbody> <tr> <td>公演电影学部电影专业, 话剧专业(演出)</td> <td>自我介绍(视频)和作品集</td> </tr> <tr> <td>公演电影学部话剧专业(演技), 音乐剧专业</td> <td>自我介绍(视频)和演技视频</td> </tr> <tr> <td>音乐学部声乐专业</td> <td>意大利或德国曲目(建议脱稿)</td> </tr> <tr> <td>音乐学部国乐专业(理论, 作曲 除外)</td> <td>韩国或者所在国的传统器乐或声乐(建议脱稿)</td> </tr> <tr> <td>新潮音乐学部爵士表演专业 (包括爵士钢琴, 爵士贝斯, 爵士鼓, 爵士吉他/管弦乐)</td> <td>无伴奏演奏曲</td> </tr> <tr> <td>新潮音乐学部唱作人专业</td> <td>建议本人亲自伴奏</td> </tr> </tbody> </table> | 招生学科 | 具体要求 | 公演电影学部电影专业, 话剧专业(演出) | 自我介绍(视频)和作品集 | 公演电影学部话剧专业(演技), 音乐剧专业 | 自我介绍(视频)和演技视频 | 音乐学部声乐专业 | 意大利或德国曲目(建议脱稿) | 音乐学部国乐专业(理论, 作曲 除外) | 韩国或者所在国的传统器乐或声乐(建议脱稿) | 新潮音乐学部爵士表演专业 (包括爵士钢琴, 爵士贝斯, 爵士鼓, 爵士吉他/管弦乐) | 无伴奏演奏曲 | 新潮音乐学部唱作人专业 | 建议本人亲自伴奏 |
| 招生学科 | 具体要求 | | | | | | | | | | | | | | |
| 公演电影学部电影专业, 话剧专业(演出) | 自我介绍(视频)和作品集 | | | | | | | | | | | | | | |
| 公演电影学部话剧专业(演技), 音乐剧专业 | 自我介绍(视频)和演技视频 | | | | | | | | | | | | | | |
| 音乐学部声乐专业 | 意大利或德国曲目(建议脱稿) | | | | | | | | | | | | | | |
| 音乐学部国乐专业(理论, 作曲 除外) | 韩国或者所在国的传统器乐或声乐(建议脱稿) | | | | | | | | | | | | | | |
| 新潮音乐学部爵士表演专业 (包括爵士钢琴, 爵士贝斯, 爵士鼓, 爵士吉他/管弦乐) | 无伴奏演奏曲 | | | | | | | | | | | | | | |
| 新潮音乐学部唱作人专业 | 建议本人亲自伴奏 | | | | | | | | | | | | | | |

线上韩语考试说明

- 1) 对象: 仅未取得TOPIK3级及以上的大一新生报名者(英语授课除外)
- 2) 日期: 2023. 11. 4(六) 10:00 ~
- 3) 出题类型: 根据韩语水平考试(TOPIK)水平, 在线进行口语考试
- 4) 合格标准: 获得60分(满分100分)以上为合格
- 5) 免试对象: 国家奖学生, 姊妹大学校(院)长推荐者中具备韩国语能力考试(TOPIK)1级以上成绩者
- 6) 全体线上韩语考试应试考生都必须参加试音, 未参加试音者, 即视为放弃考试资格。
(未添加微信dankook_global的考生, 也视为放弃考试资格。)

审核标准

- 1) 根据招生标准与程序, 符合条件都予以合格。
- 2) 未达到报名资格者, 材料不完整者, 作弊者, 不能证明其身份者均不是审核对象。
→ 学历认证报告(领事认证) 未提交者, 将不能通过一阶段审核。
- 3) 线上韩语考试缺考或考官平均分数未达60分(100分为满分), 将不能通过一阶段审核。
- 4) 实技考核的对象若满足以下情况时, 将不能通过第一阶段审核。

1. 实技考核材料未提交
2. 实技考核细节要求未满足
3. 考官平均分数低于60分

- 5) 对于招生指南里没有明确提到的事项, 根据外国新、插班生选拔的基本原则进行处理。

05 报名指南

报名时间

2023. 10. 2(一) 10:00 ~ 20(五) 17:00



报名费用

| 招生领域 | 报名费 | | 报名费退还 |
|------------------------|-----|----------|---|
| 全专业 (艺能除外) | 1阶段 | 60,000圆 | → 韩语考试不合格者, 第2阶段报考费将会被一次性退还到提交申请书时填写的韩国内银行账户。 → 接收报考费的银行账户必须是可用的银行账户, 请确认后填写 |
| | 2阶段 | 60,000圆 | |
| | 合计 | 120,000圆 | |
| 艺能专业 (艺术大学文艺创作专业除外) | 1阶段 | 60,000圆 | → 报名费退还到海外账户时, 银行将收取手续费, 实际退款金额将少于第2阶段报考费 |
| | 2阶段 | 100,000圆 | |
| | 合计 | 160,000圆 | |

→ 报名费结算后不可申请退款。

06 提交材料

提交时间：仅限于2023. 10. 2(一) ~ 26(四)材料到达

提交方法：在报考网站上打印提交材料用标贴后, 粘粘在信封上以挂号邮件方式提交

提交地点：(16890) 경기도 용인시 수지구 죽전로 152(죽전동 126번지)
단국대학교 국제처 국제교육1팀(국제관 317호)

| 提交材料 | 新生 | 插班生 | 备注 |
|--|----|-----|---|
| 1) 入学志愿书, 自我介绍书* 学习计划书*1份 | ○ | ○ | - 亲笔签名后提交 |
| 2) 高中毕业(预毕业)证明书1份 | ○ | | - 中国大陆普高(预)毕业生请参照 第50页 所需提交的材料 - 中国港澳台及其他国家高中(预)毕业生请提交海牙或领事认证 (请提交韩文或英文原版公证书) |
| 3) 高中成绩证明书1份 | ○ | | - 提交翻译公证 或 领事认证 或 海牙认证原版(韩文或英文) |
| 4) 前籍大学毕业(预毕业)证明书或在籍 (在学, 休学, 开除)证明书1份 | | ○ | <中国大陆大学毕业> - 毕业(预毕业)证明书或在籍(在读、休学、退学)证明书: 提交学信网网上认证书打印件(英语) 或 领事认证(韩语或英语) |
| 5) 前籍大学成绩证明1份 | | ○ | - 成绩证明书*: 提交翻译公证 或 领事认证 或 海牙认证原版(韩文或英文) <中国港澳台和其他国家大学毕业> - 提交Apostille确认书或领事认证(韩语或英语) |
| 6) 前籍大学毕业学分标示资料 | | ○ | - 提交标明前籍大学/大专(所属学科)的所修毕业学分的材料(韩语或英语) (可提交学校官网的打印件或前籍大学/大专的确认书) - 四年制本科(预)毕业或专科(预)毕业生提交(预)毕业证明即可 |
| 7) 檀国大学国际教育中心成绩证明书 | | ○ | - 取得TOPIK3级及以上的大二大三插班生无需提交 |
| 8) 申请者护照复印件1份 | ○ | ○ | - 本人护照剩余的有效期至少有1年以上 |
| 9) 外国国籍证明书1份 (身份证或护照复印件) | ○ | ○ | - 申请者与父母双方均须提交 |
| 10) 亲属关系公证书原件 (中国大陆申请者需附加提交户口簿 簿翻译公证书) | ○ | ○ | - 国外政府机构所发放的亲属关系证明书 - 父母离异或者去世, 需额外提交证明材料 - 公证书内必须附有英文或韩文公证内容 |
| 11) 韩国法务部签发外国人登录证复印件1份 | ○ | ○ | - 持有者提交 |
| 12) 有关财政担保材料*各1份 | ○ | ○ | - 申请人本人或父母名义的韩国境内或境外银行发行的存款证明 - D-4签证持有者建议提交韩国银行发行的本人名义的存款证明 - 为了确认财政能力, 申请全过程中可能会追加要求存款证明 |
| 13) 学历调查同意书*各1份 | ○ | ○ | - 新生提交高中学历调查同意书, 插班生提交最终大学学历调查同意书 |
| 14) 韩国语能力考试(TOPIK)成绩证明书 | ○ | ○ | - 持有者提交 |
| 15) TOPIK报名收据或准考证 | | ○ | - 仅报名TOPIK的插班生提交 |
| 16) 出入境情况证明书1份 | ○ | ○ | - 在韩国居住者提交(D4, D2, F签证持有者必须提交) |
| 17) TOEFL iBT/IELTS成绩单提交1份 | ○ | ○ | - 申请英语授课者提交 |
| 18) 宿舍申请书1份 | ○ | ○ | - 申请宿舍者提交 |
| 19) 实技审核材料(视频或作品集) | ○ | ○ | - 仅艺能领域的申请者提交(艺术大学文艺创作专业除外) |

- 所有材料的有效期间为文书提交的6个月内。(但,存款证明请按照以下基准提交。)
- 存款证明仅认证报名开始日前30天内开具的,或材料审核期间仍处于冻结状态。(但,开具日必须在6个月以内。)
- 提交由所属高中或大学开具的韩语或英语成绩证明原件时,不需要再做Apostille,领事认证或翻译公证。
- 所有资料必须按照顺序整理后提交。
- 中国(包括港澳台地区)申请者必须本人微信添加 dankook_global。
- 所有的资料原则上需提交原件,提交复印件的情况需发证机关或国际教育1组做原件对照。
- 海外申请者务必咨询之后再报名。(为取得入境签证,可能需提交附加资料。)
- 只承认以报名开始日为基准,有效期内的语言成绩单。
- 得到本国政府提供的国家奖学金的学生还须提交有关奖学金的证明书。
- *标志的文件,请缴费申请费用之后下载并填写。
- 在正规四年制大学里一年以上的教育课程肄业者必须提交相关证明,如为毕业所需的学期、肄业学分,为取得学士学位最少需要多少学分等。
- 正规学期中,如有缺少成绩的学期,需提交由前籍学校开具的盖有公章的说明原件。非韩语或英语的说明,需提交原件和翻译公证书。

资料提交时注意事项

1. (预)毕业证明书

| 区别 | 对象 | 提交材料 |
|----------------|----------------------|---|
| 大一新生 | 中国大陆普高 | 1. 毕业生: 学信网学历认证(英文) 2. 预毕业生: 预毕业证明领事认证原本 |
| | 中国大陆职业学校毕业生 | 1. 网上认证 ◎ 地方教育局(厅)发行的(预)毕业证明,可在网络上确认 → 需要驻中大韩民国领事认证 2. 线下发行 ◎ 地方教育局(厅)发行的(预)毕业证明书 → 需要驻中大韩民国领事认证 + 学校信息确认书* ◎ 学校自行发行的(预)毕业证明书 → 省教育厅(市教育局)认证 → 需要驻中大韩民国领事认证 + 学校信息确认书* |
| | 职业高中 | 择 1 |
| | 技工学校 | 从人力资源社会保障部的官网(http://www.mohrss.gov.cn/)查找的结果(只认证可在在线查询学历的学生) → 需要驻中大韩民国领事认证 |
| | 中国大陆其他高中同等学力认证学校的毕业生 | 学校自行发行的毕业证书 → 驻中大韩民国领事认证 + 办学许可证复印件(无需公证) * 办学许可证是事业单位法人证书或民办学校办学许可证 |
| 大二 大三 插班 | 全体插班生 | 1. (大专)本科学位(预)取得者: (大专)本科毕业证明书 ◎ 中国大陆(大专)大学: 学信网英文学历认证 ◎ 韩国(大专)大学: 毕业证明书原件 ◎ 中国港澳台或其他国家(大专)大学: 海牙认证或领事认证原本 2. 4年制大学在读(休学)生: 高中毕业证明书 + 本科在学(休学)证明书 ◎ 提交学信网英文学历报告(非中国大陆情况,提交海牙认证或领事认证) ◎ 中国大陆的中等职业学校或其他高中同等学力认证学校毕业生, 请按照新生的追加提交材料的要求提交 |

★ 标注的材料,请在网申网站(<http://jinhakapply.com>)下载并填写。

- 大一新生中,高中预毕业生在合格后,提交高中毕业证书后,才可以发放标准入学书。(学信网英文学历报告 或 领事认证 或 海牙认证。)

- 插班生中,提交预毕业证明或预结业证明者,需提交前大学的毕业证明书或结业证明书,才可发放标准入学书。(学信网英文学历报告 或 领事认证 或 海牙认证。)

2. 用英语或韩语以外语言记载的资料需公证后提交英语或韩文的翻译件,并提交翻译人确认书和翻译人的身份证复印件。(翻译人的确认书和身份证无需公证)。
3. 有提前毕业、跳级、成绩及在学记录遗失等特殊状况,需提交相关教育机关所发放的证明文件。
4. 提交的资料上名字与实际使用姓名不符时,需提交相关国家签发的本人证明文件。
5. 入学考试期间,根据实际情况本校有权利要求学生提交相关补充资料。
6. 所有提交的材料均不返还。
7. 财政相关证明资料

| 类别 | 提交材料 |
|----------------|---|
| 报名者自己或其父母为担保人时 | → 财政担保书(指定样式)1份 → 申请者自己或其父母名义的国内外银行存款余额证明书(须存20,000,000韩元以上或等值货币)1份 → 且为了确认财政能力,申请全过程中可能会追加要求存款证明书的领事认证后提交。 |
| 从外部机构得到奖学金时 | → 奖学金证明书(发放奖学金的机关签发)1份 |

8. 合格后,在申请D-2签证(或在韩变更)时,根据所属大韩民国领事馆(或出入境外国人厅)的规定,可能需要提供学历认证书,存款证明等材料,请另行准备。

Apostille公约相关材料的提交

Apostille公约: 签约国之间相互承认的,特定的官方机构对公文上其主管部门所做签字,盖章的真实性予以确认的行为过程和结果,是一种特定的“认证”。

- 名称: Convention Abolishing the Requirement of Legalization for Foreign Public Document (海牙关于取消外国公文认证要求的公约)

Apostille公约加入国确认网址: (https://www.0404.go.kr/consulate/consul_apo.jsp)

07 报名须知

线上报名

1. 入学文书必须要申请学生本人完成撰写。
2. 校方不退还申请者提交的材料(包括报名费用)。报名结束(报名费交纳完毕)之后,报考者不能更改入学申请书的内容或取消申请。故报考前应熟悉了解招生简章,缴费之前应再次确认其内容。
3. 学生登录指定申请网站并缴纳报考费后,收到应试号码,报名自此生效。应考生需打印准考证,考试当天应携带准考证、身份证(护照、外国人(居民)登录证)参加考试。
4. 填写入学申请书时要特别注意防止误填或遗漏等,填写内容中因输入错误(漏掉)等发生的所有问题均由考生本人负责,不由大学负责。
5. 网上报名完成的申请者在最终合格结果发表前1周内追加提交语言成绩单,最新语言成绩将反映到对应的奖学金。
6. 准考证丢失时需在网上重新打印。
7. 入学申请书中填写(输入)的联系方式如在录取期间发生变更时,应立即联系竹田校区国际处全球教育组进行更改,对入学申请书中记载的联系方式错误或联系不上而发生的所有损失,将由学生本人承担。
8. 遗传性疾病患者,危害别人的传染性疾病患者、先天性疾病患者或如无第三者的帮助就不能上学(实验,实习)的疾病患者均不可申请。
9. 其他详情请参照招生报名网站的介绍事项。

提交材料

1. 所有材料的有效期间为文书提交的6个月内。(但,存款证明请按照以下基准提交。)
2. 存款证明仅认证报名开始日前30天内开具的,或材料审核期间仍处于冻结状态。(但,开具日必须在6个月以内。)
3. 如入学申请书及提交材料里的内容不符事实,或如以非正当手段(提交材料的伪造·变造,替考等)获得录取,或如入学前不能毕业(肄业)于前籍学校,即使已得入学批准,也将被取消录取资格。
4. 如果韩国法务部出入境管理所或者在外领事机关不予发放签证的话,即使最终合格也将被取消入学资格。此类情况学校不承担任何责任。
5. 如果校方向申请者要求学历调查,申请者必须予以配合。

入学考试相关

1. 本招生简章中没有明示的事项,将根据新生选拔准则进行处理。另外,考试成绩不公开。
2. 线上韩语考试通过skype进行。
3. 考生考试当日不能携带任何无线通讯设备(手机等)及电子词典进入考场。如违反此律,则视为作弊者,取消考试资格。
4. 考生考试当日必须出示准考证与身份证明,如护照,本国身份证,或外国人登录证。

K-LEAP教育课程

1. 大一新生(韩语授课)申请者中未取得TOPIK4级及以上成绩的学生,为了提高韩语运用能力,在入学后的2个学期中必修K-LEAP课程。

2. 第一学期修7门K-LEAP科目(18学分),第二学期修3门K-LEAP 3科目(7学分)和所属学科的专业课或者教养课。
3. K-LEAP科目可被代替认证为共通教养课。
4. 大二大三插班生和英文授课的申请者不适用此课程。

合格者通知及登录相关

1. 合格者发表于本校官网“招生指南”(http://ipsi.dankook.ac.kr),不进行个别通知。
→ 查询方法:檀国大学官网 → 입학안내 → 학부입학 바로가기 → 죽전/천안 캠퍼스 바로가기 → 합격자조회
2. 合格者需认真阅读“合格者通知书”。
3. 所有通知通过本校官网“招生指南”统一发布(http://ipsi.dankook.ac.kr)。
4. 学费只可用韩币缴纳。
5. 插班生在前大学是在学或者休学的状态的情况,需在2024年2月29日前完成退学处理。(包括檀国大学学生。)

毕业条件

1. 最迟必须在毕业的前一个学期提交TOPIK4级以上证明书,才能取得毕业资格
2. 插班生:本校是根据前身大学的专业和已修科目来决定认证学分的,所得认证学分不足的情况下,可能无法在正规学期内按时毕业。

正规课程学分申请标准(英语授课申请者除外)

对象:获得自己国家政府奖学金的学生、得到姐妹学校校长(院长)推荐的姐妹学校学生

TOPIK 3级以上:无限制

TOPIK 2级:每学期最多可申请**12学分**

TOPIK 1级:每学期最多可申请**6学分**

→ 入学后重新提交比入学申请时更高的TOPIK等级证明时,下一学期按照相应学分申请标准结算正规学分上限。

→ 本校线上韩语考试合格者没有学分限制。

其他

1. 根据《国民健康保险法》及《同行施行规则》,从2021年3月开始,外国人留学生和其他外国人一样,将义务加入国民健康保险。投保金额等详细内容仅限于合格者,将另行通知。
2. 本招生简章的所有事项不会进行另外通知,请准确熟知公告,因未熟读公告而造成的问题由申请者本人承担责任。
3. 入学后一切事宜按照学校相关法律法规处理。

08

奖学金及学费指南

新生奖学金

<韩语授课>

| 区分 | 奖学金 | |
|---|-------------------------------------|-----------------------|
| TOPIK6级取得者 | 学费的60%(4年), 住宿费(4年) 但前一个学期学分需为3.7以上 | |
| TOPIK4级, 5级取得者 | 学费的50%(1学期), 住宿费(1学期) | |
| TOPIK3级取得者 | 学费的30%(1学期), 住宿费(1学期) | |
| 线上韩语考试合格者 | 本校语学院研修者(6个月课程及以上) | 学费的20%(1学期), 住宿费(1学期) |
| | 本校语学院研修者(6个月未滿), 或非语学院生 | 学费的15%(1学期), 住宿费(1学期) |
| 插班生中檀国大学国际教育中心语 学研修课程3阶段毕业生(或檀国大学 国际教育中心语学研修课程4阶段 成绩单可提交者) | 本校语学院研修者(6个月以上) | 学费的20%(1学期), 住宿费(1学期) |
| | 非本校语学院研修者(6个月以上) | 学费的15%(1学期), 住宿费(1学期) |

- 英语授课申请者除外。
- 不包括所属国政府奖学金获得者。
- 奖学金标准及金额可能随学校奖学金制度有所变化。
- 生活馆奖学金只适用于入住4人室。
- 2人间宿舍选拔入住, 但需自费申请。

<英语授课：全球化经营专业>

| 奖学基准 | 奖学金 |
|---------------------------------------|---|
| TOEFL Score iBT 71以上 或者 IELTS 5.5以上 | → 免除30%课程费(4年间) → 在校生奖学金: 只限于前一学期平均成绩3.0以上时 → 入学后连续修3学期才可发放奖学金 |
| TOEFL Score iBT 80分以上 或者 IELTS 6.5以上 | → 免除50%课程费(4年间) → 在校生奖学金: 只限于前一学期平均成绩3.1以上时 → 入学后连续修3学期才可发放奖学金 |
| TOEFL Score iBT 112分以上 或者 IELTS 7.5以上 | → 免除75%课程费(4年间) → 在校生奖学金: 只限于前一学期平均成绩3.3以上时 → 入学后连续修3学期才可发放奖学金 |
| TOEFL Score iBT 115分以上 或者 IELTS 8.5以上 | → 课程费全免(4年间) → 宿舍费全免(4年间) → 在校生奖学金: 只限于前一学期平均成绩3.5以上时 → 入学后连续修3学期才可发放奖学金 |

- 不包括所属国政府奖学金获得者。
- 奖学金标准及金额可能随学校奖学金制度有所变化。
- 生活馆奖学金只适用于入住4人室。
- 2人间宿舍选拔入住, 但需自费申请。

<英语授课：移动通讯系统工程>

| 奖学基准 | 奖学金 |
|---------------------------------------|---|
| TOEFL Score iBT 80分以上 或者 IELTS 6.5以上 | → 免除50%课程费(4年间) → 在校生奖学金: 只限于前一学期平均成绩3.1以上时 → 入学后连续修3学期方可发放奖学金 |
| TOEFL Score iBT 112分以上 或者 IELTS 7.5以上 | → 免除75%课程费(4年间) → 在校生奖学金: 只限于前一学期平均成绩3.3以上时 → 入学后连续修3学期方可发放奖学金 |
| TOEFL Score iBT 115分以上 或者 IELTS 8.5以上 | → 课程费全免(4年间) → 宿舍费全免(4年间) → 在校生奖学金: 只限于前一学期平均成绩3.5以上时 → 入学后连续修3学期方可发放奖学金 |

- 不包括所属国政府奖学金获得者。
- 奖学金标准及金额可能随学校奖学金制度有所变化。
- 生活馆奖学金只适用于入住4人室。
- 2人间宿舍选拔入住, 但需自费申请。

在校生奖学金(英语授课申请者除外)

| 区分 | TOPIK | | | | 备注 |
|--------------------|------------------|------------------|------------------|------------------|---------------------------------|
| | 未持有或 2级及以下 | 3级 | | 4级及以上 | |
| | | 大一大二 | 大三大四 | | |
| 前一学期 最高分学生 | - | - | - | 全额学费 & 住宿费 | ※ 生活补助金(住宿费的80%) 适用于入学1年后 |
| 前一学期 均分 4.0以上 | 学费20%减免 & 住宿费 | 学费50%减免 & 住宿费 | 学费20%减免 & 住宿费 | 学费60%减免 & 住宿费 | ※ 注, 因为个人原因没有 入住 宿舍将不被补助 |
| 前一学期 均分 3.5~4.0 | 学费15%减免 & 住宿费 | 学费40%减免 & 住宿费 | 学费15%减免 & 住宿费 | 学费50%减免 & 住宿费 | ※ 宿舍入住黑名单人员 不适用 住宿奖学金 和生活补助金 |
| 前一学期 均分 3.0~3.5 | 学费10%减免 & 住宿费 | 学费30%减免 & 住宿费 | 学费10%减免 & 住宿费 | 学费40%减免 & 住宿费 | |
| 前一学期 均分 2.5~3.0 | - | 住宿费 | - | 学费30%减免 & 住宿费 | |

- 前一学期最高分学生是从前一学期均分在4.0以上的学生中选拔最高分者。
(各年级1名, 需持有TOPIK4级及以上成绩。)
- 不包括所属国政府奖学金获得者。
- 奖学金标准及金额可能随学校奖学金制度有所变化。
- 生活馆奖学金只适用于入住4人室。
- 2人间宿舍选拔入住, 但需自费申请。

TOPIK 奖励金

| 区分 | 奖励金 |
|----------------------|-----------|
| 大一学年中参加TOPIK考试的学生 | 报销考试费 |
| 大一学年中首次取得4级及以上的学生 | 500,000韩圆 |
| 大二~大三学年中首次取得4级及以上的学生 | 300,000韩圆 |

→ TOPIK奖励金不可重复获得。

学费(以2023学年为参考, 每年可能会有变化)

| 学费分类 | 招生学院 | 课程费 (学杂费) | 课程费 |
|-------------------|--|--------------|--------------|
| 人文社会 | 竹田: 文科学院, 法学院, 社会科学学院(媒体与传播学部除外), 经营经济学院(国际学部除外) | 180,000韩圆 | 4,031,000韩圆 |
| | 天安: 外国语学院, 公共·保健科学学院(公共政策学系, 社会福利学系, 环境资源经济学系, 保健行政学系), 艺术学院(文艺创作学科) | | |
| 理科 | 竹田: 社会科学学院(媒体与传播学部), 软件融合学院(情报统计学系) 天安: 科学技术学院(数学系) | | 4,756,000韩圆 |
| 体育 | 天安: 运动科学学院 | | 4,881,000韩圆 |
| 工学 | 竹田: 工科学院, 软件融合学院(软件学系, 计算机工学学系) 天安: 科学技术学院(数学系除外), 生命工学学系 | | 5,308,000韩圆 |
| 艺能 | 竹田: 音乐·艺术学院 天安: 艺术学院(文艺创作系除外) | | 5,530,000韩圆 |
| 国际学部 (人文社会) | 竹田: 经营经济学院(国际学部) | | 6,076,000韩圆 |
| 国际学部(工学) | 竹田: 软件融合学院(移动通讯系统工程学) | | 6,479,000韩圆 |
| 医学及牙医 (沙特政府支援) | 天安: 医学院 | | 21,820,000韩圆 |
| 保健 | 天安: 公共·保健科学学院(临床病理学系, 物理治疗学系, 心理治疗学系) | | 4,820,000韩圆 |

09 宿舍指南



设施规模

1. 竹田校区

| 区分 | 房间现状 | 容纳人员 |
|-----|-------------------|--------|
| 集贤斋 | 2人间 19个, 4人间 102个 | 446名 |
| 雄飞馆 | 1人间 6个, 2人间 534个 | 1,074名 |
| 真理馆 | 2人间 3个, 4人间 229个 | 922名 |

咨询处: 生活馆行政室 (☎ 031-8005-2906~7, 官网 domi.dankook.ac.kr)

2. 天安校区

| 区分 | 房间现状 | 容纳人员 |
|-----|------------------|--------|
| 檀雨馆 | 1人间 6个, 2人间 504个 | 1,014名 |
| 奉献馆 | 2人间 2个, 4人间 230个 | 924名 |

咨询处: 生活馆行政室 (☎ 041-550-1162~4, 官网 chdomi.dankook.ac.kr)

费用(以2023年秋季学期为准)

1. 集贤斋(竹田校区)

| 入住类型 | | 宿舍费用(韩圆) | 保证金(韩圆) | 缴纳金额(韩圆) | 备注 |
|---------------|-----|-----------|---------|-----------|----------|
| 半年度 (176天) | 2人间 | 2,077,400 | - | 2,077,400 | 包含6天折扣减免 |
| | 4人间 | 1,271,600 | | 1,271,600 | |

2. 真理馆(竹田校区)

| 入住类型 | | 宿舍费用(韩圆) | 保证金(韩圆) | 缴纳金额(韩圆) | 备注 |
|-----------|-----|-----------|---------|-----------|----------|
| 半年度(176天) | 4人间 | 1,371,900 | 100,000 | 1,471,900 | 包含6天折扣减免 |

3. 奉献馆(天安校区)

| 入住类型 | | 宿舍费用(韩圆) | 保证金(韩圆) | 缴纳金额(韩圆) | 备注 |
|-----------|-----|-----------|---------|-----------|----------|
| 半年度(176天) | 4人间 | 1,371,900 | 100,000 | 1,471,900 | 包含6天折扣减免 |

- 根据奖学金标准,宿舍费(4人间)可获得部分或全额减免。
- 宿舍费用以2023-2学期为基准,2024-1学期可能会有变动。
- 宿舍申请者在提交材料时,需要提交宿舍申请书,『不提交时按不申请处理』。

10 签证指南

→ 合格后,在申请D-2签证(或在韩变更)时,根据所属大韩民国领事馆(或出入境外国人厅)的规定,可能需要提供学历认证书,存款证明等材料,请另行准备。

语学研修(D-4签证)持有申请者

- 在申请本校的过程中,持有D-4签证的申请人可以通过追加“语学研修课程”,延长滞留期间。
- D-4签证持有合格者,需在2024年2月初提交大学进修(D-2签证)变更所要材料。

→ 准备材料

1. 申请书(粘贴照片),外国人登陆证(D-4)
2. 10万韩圆收入印花,3万韩圆登陆证发行手续费(仅现金)
3. 护照复印件
4. 标准入学许可书
5. 学费缴纳收据
6. 最终学历材料
7. 语学院课程出席证明书
8. 存款证明书(必须为韩国国内银行发行的本人名义的存款证明)
9. 韩国国内滞留地材料

→ 持有D-4签证的合格学生在D-2签证变更完成前不得离开韩国。

韩国国外滞留者(D-2签证新签发申请者)

- 国际处通过邮箱发放标准入学许可书及檀国大学营业执照扫描件
- 前往所属管辖的大韩民国当领事馆或签证中心申请签证

→ 准备材料

1. 申请书(粘贴照片)
2. 护照原本和复印件
3. 檀国大学营业执照
4. 标准入学许可书
5. 最终学历认证材料
6. 财政能力证明材料

→ 各地所需材料会有所不同,申请签证前请务必咨询所属管辖大韩民国领事馆,需亲自访问大使馆或签证中心申请D-2签证。



竹田校区



天安校区



Table of Contents

| | |
|--|--------|
| 1. Application Schedule | ... 62 |
| 2. Admission Unit | ... 63 |
| 3. Eligibility Requirements | ... 67 |
| 4. Admission Criteria | ... 68 |
| 5. Admission Procedure | ... 70 |
| 6. Required Documents | ... 71 |
| 7. Important Notes for Applicants | ... 74 |
| 8. Scholarships and Tuition Fees | ... 76 |
| 9. Information on Dankook University Dormitory | ... 79 |
| 10. Important Visa Information | ... 81 |
| 11. Campus Map | ... 82 |
| <Form> | |
| - Official Agreement for Enrollment and Academic Credits | ... 88 |
| - Affidavit of Financial Support | ... 89 |
| - A Letter of Self-Introduction | ... 90 |
| - Dormitory Application Form | ... 92 |
| - School Information Confirmation Form | ... 93 |
| - Certificate of Translator | ... 94 |

* This admission guide is originally written in Korea and translated into English.
The Korean admission guideline prevails over the English version if any conflicts occur in the interpretation.

Quick steps to studying at DKU



01 Application Schedule

| Classification | Schedule | Notes |
|--|--|---|
| On-line Application | October 2, 2023(Mon.) 10:00 ~ 20(Fri.) 17:00 | All prospective students are required to apply through the online application system : www.jinhakapply.com |
| Documents Submission | Until October 26, 2023(Thur.) | Once the online application for admission is completed, print the mailing label, and send it through the registered airmail. No submission of documents by the deadline will fail your admission. |
| Online Korean Language Test (Korean Language Proficiency Test) | November 4, 2023(Sat.) 10:00 ~ | <ol style="list-style-type: none"> The Freshman Applicants who don't have the TOPIK 3 or above, are required to take the Online Korean Language Test. The details of the examination will be posted on the DKU website(http://ipsi.dankook.ac.kr) 5 days before the exam day. The test verification slip and ID card (Passport, Certificate of alien registration) must be carried on the exam day |
| Online Korean Language Test Result Announcement | November 9, 2023(Thur.) 14:00 | The result of the Online Korean Language Test will be announced on the DKU admission homepage (http://ipsi.dankook.ac.kr) |
| Final Announcement | November 24, 2023(Fri.) 14:00 | The final result will be announced on the DKU admission homepage(http://ipsi.dankook.ac.kr) |
| Tuition Payment | January 10, 2024(Wed.) 9:00 ~ 19(Fri.) 16:00 | <ol style="list-style-type: none"> Print out a letter of acceptance and tuition invoice from the DKU admission homepage, and complete the registration by the tuition payment Failure in tuition payment will result in revocation of acceptance The payment details and method will be informed on the DKU admission homepage. |
| Issuance of Certificate of Admission | January 22, 2024(Mon.) ~ | Global Education Team 1, Office of International Affairs (International Hall #317) |

→ The above schedule may be subject to change with the prior notice on the DKU admission homepage.

02 Admission Unit

Jukjeon Campus

| Campus | Area | College | Departments | Transfer | | |
|---|---|---|---|----------|-------|-------|
| | | | | Freshman | 2year | 3year |
| Jukjeon | Humanities | Humanities | Korean Language and Literature | ○ | ○ | ○ |
| | | | History | ○ | ○ | ○ |
| | | | Philosophy | ○ | ○ | ○ |
| | | | British and American Humanities | ○ | ○ | ○ |
| | | Law | Law | ○ | ○ | ○ |
| | | | | | | |
| | | Social Science | Political Science and International Relations | ○ | ○ | ○ |
| | | | Public Administration | ○ | ○ | ○ |
| | | | Urban Planning and Real Estate Studies [Urban and Regional Planning] [Real Estate] | ○ | ○ | ○ |
| | | | Media Communications [Journalism] [Media Contents] [Advertising and Public Relations] | ○ | ○ | X |
| | | | Communications [Journalism] [Media Contents] [Advertising and Public Relations] | X | X | ○ |
| | | | Counseling | ○ | ○ | ○ |
| | | Business and Economics | Economics | ○ | ○ | ○ |
| | | | International Trade | ○ | ○ | ○ |
| | Business Administration [Business Administration] [Accounting] | | ○ | ○ | ○ | |
| | Global Business Administration(English Track) | | ○ | X | X | |
| | International Studies - International Business Administration (English Track) | X | ○ | ○ | | |
| | Sciences | Engineering | Electronics and Electrical Engineering | ○ | X | X |
| | | | Semiconductor Convergence Engineering | ○ | X | X |
| | | | Electronics and Electrical Engineering Electronics and Electrical Engineering Semiconductor Convergence Engineering | X | ○ | X |
| | | Electronics and Electrical Engineering [Electronics and Electrical Engineering] [Semiconductor Convergence Engineering] | X | X | ○ | |
| | | Polymer Science and Engineering - Polymer Science & Engineering Fiber System Engineering | ○ | ○ | ○ | |
| | | Civil and Environmental Engineering | ○ | ○ | ○ | |
| | | Mechanical Engineering | ○ | ○ | ○ | |
| | | Chemical Engineering | ○ | ○ | ○ | |
| | | Architecture - Architecture(5 years) Architectural Engineering | ○ | ○ | ○ | |
| | | Software convergence | Software Science | ○ | ○ | ○ |
| Computer Engineering | | | ○ | ○ | ○ | |
| Mobile Systems Engineering(English Track) | | | ○ | ○ | ○ | |
| Statistics Data Science | | | ○ | X | X | |
| Information Statistics | X | ○ | ○ | | | |
| Art | Music and Arts | Ceramic Arts* | ○ | ○ | ○ | |
| | | Design* - Visual Communication Design Fashion Merchandise Design | ○ | ○ | ○ | |
| | | Theater and Film* - Film - Theory·Directing·Staff Theater - Directing Theater - Acting Musical - Acting | ○ | ○ | ○ | |
| | | | ○ | ○ | ○ | |
| | | | ○ | ○ | ○ | |

| Campus | Area | College | Departments | Transfer | | |
|-----------------|------|----------------|---|----------|-------|-------|
| | | | | Freshman | 2year | 3year |
| Jukjeon | Art | Music and Arts | Dance* - Korean Traditional Dance | ○ | ○ | ○ |
| | | | Ballet | ○ | ○ | ○ |
| | | | Modern Dance | ○ | ○ | ○ |
| | | | Music and Arts* - Piano | ○ | ○ | ○ |
| | | | Instrumental Music | | | |
| | | | String - Violin | ○ | ○ | ○ |
| | | | Viola | ○ | ○ | ○ |
| | | | Cello | ○ | ○ | ○ |
| | | | Double Bass | ○ | ○ | ○ |
| | | | Wind - Flute | ○ | ○ | ○ |
| | | | Oboe | ○ | ○ | ○ |
| | | | Clarinet | ○ | ○ | ○ |
| | | | Bassoon | ○ | ○ | ○ |
| | | | Wind - Horn | ○ | ○ | ○ |
| | | | Trumpet | ○ | ○ | ○ |
| | | | Tenor Trombone | ○ | ○ | ○ |
| | | | Bass Trombone | ○ | ○ | ○ |
| | | | Tuba | ○ | ○ | ○ |
| | | | Percussion | ○ | ○ | ○ |
| | | | Vocal Music | ○ | ○ | ○ |
| | | | Music Composition | ○ | ○ | ○ |
| | | | Korean Traditional Music | | | |
| | | | Instrumental Music(Pipe) - Pipe | ○ | ○ | ○ |
| | | | Daegeum | ○ | ○ | ○ |
| | | | Haegeum | ○ | ○ | ○ |
| | | | Ajaeng | ○ | ○ | ○ |
| | | | Sogeum-Danso | ○ | ○ | ○ |
| | | | Instrumental Music(String) - Geomungo | ○ | ○ | ○ |
| | | | Gayageum | ○ | ○ | ○ |
| | | | Instrumental Music(Percussion)-JanggoGong | ○ | ○ | ○ |
| Vocal - Jeongga | ○ | ○ | ○ | | | |
| Pansori | ○ | ○ | ○ | | | |
| Confucian | ○ | ○ | ○ | | | |
| Theory | ○ | ○ | ○ | | | |
| Composition | ○ | ○ | ○ | | | |

Cheonan Campus

| Campus | Area | College | Departments | Transfer | | | |
|---|---|---|-------------------------------------|--------------------------------|-------------|-------|---|
| | | | | Freshman | 2year | 3year | |
| Cheonan | Humanities | Foreign Languages | Asian and Middle Eastern Studies | ○ | ○ | ○ | |
| | | | - Chinese Studies | ○ | ○ | ○ | |
| | | | Japanese Studies | ○ | ○ | ○ | |
| | | | Mongolian Studies | ○ | ○ | ○ | |
| | | | Middle Eastern Studies | ○ | ○ | ○ | |
| | | | Vietnamese Studies | ○ | ○ | ○ | |
| | | | European and Latin American Studies | ○ | ○ | ○ | |
| | | | - German | ○ | ○ | ○ | |
| | | | French | ○ | ○ | ○ | |
| | | | Spanish | ○ | ○ | ○ | |
| | | | Russian | ○ | ○ | ○ | |
| | | | Portuguese | ○ | ○ | ○ | |
| | | | English | ○ | ○ | ○ | |
| | | | Global Korean Language | ○ | ○ | ○ | |
| | | | Natural Science | Science and Technology | Mathematics | ○ | ○ |
| | Physics | ○ | | | ○ | ○ | |
| | Chemistry | ○ | | | ○ | ○ | |
| | Food Science and Nutrition | ○ | | | ○ | ○ | |
| | Life Sciences - Biological Sciences | X | | | ○ | ○ | |
| | Microbiology | X | | | ○ | ○ | |
| | Materials Science and Engineering | ○ | | | ○ | ○ | |
| | Food Engineering | ○ | | | ○ | ○ | |
| | Energy Engineering | ○ | | | ○ | ○ | |
| | Management Engineering | ○ | | | ○ | ○ | |
| | Bio Convergence | Life Resources - Crop Science and Biotechnology | | | ○ | X | X |
| | Animal Biotechnology | ○ | | | X | X | |
| | Environmental Horticulture | ○ | | | X | X | |
| | Landscape Architecture | ○ | | | X | X | |
| | Biomedical Science - Biological Science | ○ | | | X | X | |
| | Microbiology | ○ | X | X | | | |
| Food Engineering | ○ | X | X | | | | |
| Life Sciences and Biotechnology | Life Sciences and Biotechnology | Life Resources - Crop Science and Biotechnology | X | ○ | ○ | | |
| | | Animal Biotechnology | X | ○ | X | | |
| | | Animal Resources Science | X | X | ○ | | |
| | | Environmental Horticulture Landscape Architecture | | | | | |
| | | - Environmental Horticulture | X | ○ | ○ | | |
| | | Landscape Architecture | X | ○ | ○ | | |
| | | Art | Arts | Fine Arts* - Crafts Design | ○ | ○ | ○ |
| | | | | Oriental Painting | ○ | ○ | ○ |
| | | | | Western Painting | ○ | ○ | ○ |
| | | | | Sculpture | ○ | ○ | ○ |
| | | | | Literary Creative Writing | ○ | ○ | ○ |
| | | | | New Music* - Music Technology | ○ | X | X |
| | | | | Jazz Performance | ○ | X | X |
| | | | | Singer Songwriting | ○ | X | X |
| | | | | New Music* - Sound Engineering | X | ○ | ○ |
| Music Technology & Computer Music Composition | X | | | ○ | ○ | | |
| Jazz Piano | X | | | ○ | ○ | | |
| Jazz Bass | X | | | ○ | ○ | | |
| Jazz Drum | X | | | ○ | ○ | | |
| Jazz Guitar / Orchestral | X | | | ○ | ○ | | |
| Singer Songwriting | X | | | ○ | ○ | | |

03 Eligibility Requirements

| Campus | Area | College | Departments | Transfer | | |
|-----------------|------------------------------|-------------------------------|--|-------------------------------|-------|-------|
| | | | | Freshman | 2year | 3year |
| Cheonan | Physical Fitness | Sports Science | Recreation and Leisure Sports | ○ | ○ | ○ |
| | | | Sports Management | ○ | ○ | ○ |
| | | | International Sports Studies | | | |
| | | | - Exercise Prescription and Rehabilitation | ○ | ○ | ○ |
| | | | International Sports Studies | ○ | ○ | ○ |
| | | | Taekwondo | ○ | ○ | ○ |
| | Medical Science | Medicine | Pre-medical Course(Saudi Government Scholarship Program Students only) | ○ | X | X |
| | Humanities | Public Service | Public Policy | ○ | X | X |
| | | | Social Welfare | ○ | X | X |
| | | | Food and Resource Economics | ○ | X | X |
| | Humanities | Health Sciences | Health Administration | ○ | X | X |
| | | | Natural Science | Biomedical Laboratory Science | ○ | X |
| | Physical Therapy | | ○ | X | X | |
| | Psychology and Psychotherapy | | ○ | X | X | |
| | Humanities | Health and Welfare | Public Policy | X | ○ | ○ |
| | | | Social Welfare | X | ○ | ○ |
| | | | Environmental Resource Economics | X | ○ | ○ |
| | | | Health Administration | X | ○ | ○ |
| Natural Science | | Biomedical Laboratory Science | X | ○ | ○ | |
| | | Physical Therapy | X | ○ | ○ | |
| | | Psychology and Psychotherapy | X | ○ | ○ | |

Special Notes

- Applicant for “*” marked department must submit practical screening materials(Video or Portfolio).
- Admission unit is subject to change according to the adjustment of the university education system for 2024.
- Department with “[]” means choose a major in the sophomore year.
- The College of Education is not accepting international students.
- Freshmen at the architecture major(5 years) will be admitted into “the Specialized Architecture Education Course” for a Certificate of the Korea Architectural Accrediting Board (KAAB), and freshmen at the Department of Engineering (except architecture major) will be admitted into the “Specialized Engineering Education Course” for a Certificate of the Accreditation Board for Engineering Education of Korea (ABEEK).
- For Korean traditional music applicants, please contact the Global Education Team 1 before applying an online application for specific major details.

Common Requirements

| Classification | Eligibility Requirements | Important Notice |
|----------------|---|--|
| Freshman | <ul style="list-style-type: none"> - Both the applicant and the applicant’s parent(s) must be non-Korean citizens. - The applicant must complete regular primary and secondary education, equivalent to grades 1 to 12 in the Korean education system, either in Korea or overseas. | <ul style="list-style-type: none"> → Applying for both Jukjeon and Cheonan Campus is not allowed. → Applicant with Multi-nationality or Non-nationality is not eligible. |
| Transfer | 2nd Year <ul style="list-style-type: none"> - Both the applicant and the applicant’s parent(s) must be non-Korean citizens. - The equivalent of two semesters (a year) and 33 credits (4-year university in Korea) - The equivalent of two semesters (a year) and 1/4 graduation credits(4-year university outside Korea) - College graduate or graduate to be (both in and out of Korea) | <ul style="list-style-type: none"> → Only high schools that are legally approved and accredited by the Ministry of Education in the country they belong to are acceptable. |
| | 3rd Year <ul style="list-style-type: none"> - Both the applicant and the applicant’s parent(s) must be non-Korean citizens. - The equivalent of four semesters (2 years) and 65 credits (4-year university in Korea) - The equivalent of four semesters (2 years) and 1/2 graduation credits(4-year university outside Korea) - College graduate or graduate to be (both in and out of Korea) | <ul style="list-style-type: none"> → General Educational Development (GED), HomeSchooling, Cyber Learning, etc are not eligible to apply. |

→ For transfer students, according to the former university major and earned credits, accredited credits will be determined. If the acquired credits are less than the required (level), the number of the terms for the coursework may increase accordingly.

Language Requirements

| Classification | Departments | Admission Requirements |
|------------------------------------|--------------------------------|---|
| Korean Track (Freshman) | All Majors | TOPIK level 3(or above) or applicants who can take Online Korean Language Test |
| Korean Track (Transfer) | All Majors | TOPIK level 3(or above) or applicants who completed the level 3(or above) from the DKU Global Education Center(or applicants who can submit a transcript of level 4 or higher of DKU Global Education Center) |
| English Track (Freshman /Transfer) | Global Business Administration | TOEFL score iBT 71(or higher) or IELTS 5.5(or higher) |
| | Mobile System Engineering | TOEFL score iBT 80(or higher) or IELTS 6.5(or higher) |

- Official record of foreign language test must be valid at the time of application.(However, it is possible to apply with a test result that will be announced during the online application period.)
- Transfer applicants whose TOPIK result is announced before the final announcement, can apply under the premise of being able to obtain TOPIK 3 or higher.(TOPIK certificate must be submitted on the day of the TOPIK result announcement or the applicant’s application will be withdrawn.)

Other Requirements

| Classification | Applicants | Eligibility Requirements |
|----------------|--|---|
| Freshman | Applicants under government scholarship or recommended by the president (Dean) of the partner universities | TOPIK score level 1 or above. (Online Korean Language Test is not needed) |
| Transfer | Applicants for College of Arts and Sports Science in Cheonan campus(except the Department of New Music) | Corresponding/relevant majors in their previous education. |

→ For those who graduated from an educational course, that is not recognizable as a formal 4-year university study are not eligible to transfer.

04 Admission Criteria

Classification

| Applicants | TOPIK | Step | Criterion | | Notes |
|-----------------------------------|------------------------------|----------|-----------------------------|----------------------------------|--|
| | | | Online Korean Language Test | Document and Practical Screening | |
| Korean Track (Freshman) | TOPIK 3 or above | 1st Step | PASS | - | |
| | | 2nd Step | - | 100%(P/F) | |
| | TOPIK 1 or 2 / Without TOPIK | 1st Step | 100%(P/F) | - | → Online Korean Language Test: Speaking test (equivalent to the TOPIK Exam) → Criteria: 60 Points (out of 100) → Online Korean Language Test exemption |
| | | 2nd Step | - | 100%(P/F) | - Government scholarship holders with TOPIK level 1 or above - Applicants with the recommendation from the president/dean of the partner universities with TOPIK level 1 or above |
| Korean Track (Transfer) | - | 1st Step | PASS | - | |
| | | 2nd Step | - | 100%(P/F) | |
| English Track (Freshman/Transfer) | - | 1st Step | PASS | - | → Documents screening will be done if the applicants meet the language requirements for the admission |
| | | 2nd Step | - | 100%(P/F) | |

- Practical Screening is only for art area applicants.(Except Department of Literary Creative Writing)
- Applicants who don't have TOPIK 3 or higher must take and pass the Online Korean Language Test to proceed to the 2nd step (Document Screening).

Practical Screening

| Unit | Notes | | | | | | | | | | | | | | |
|--|--|--------|---------|--|--|----------------------------------|---|-------------|---|--|---|--|----------------------------|--------------------|-----------------------------------|
| Submitter | Applicants for Arts area(Except Department of Literary Creative Writing) | | | | | | | | | | | | | | |
| Method | Non face-to-face | | | | | | | | | | | | | | |
| Materials | Video(USB) or Portfolio(Physical materials or USB) | | | | | | | | | | | | | | |
| Details | Submit applicant's achievements such as portfolio, photos, performance/acting video ect.) related to the department in a free format. - Physical materials: A4 size - File materials: Submit a USB with PDF or video file - Video must start with a close-up of the applicant's face and admission ticket - Details for specific majors | | | | | | | | | | | | | | |
| | <table border="1"> <thead> <tr> <th>Majors</th> <th>Details</th> </tr> </thead> <tbody> <tr> <td>Film(Theory·Directing·Staff), Directing(Theater)</td> <td>Self-introduction(Video) and portfolio</td> </tr> <tr> <td>Theater(Acting), Musical(Acting)</td> <td>Self-introduction(Video) and acting video</td> </tr> <tr> <td>Vocal music</td> <td>Italy or German song(singing by memorized is recommended)</td> </tr> <tr> <td>Korean Traditional Music (except Theory and Composition)</td> <td>Korea or home country's traditional instrument or vocal (Self-accompaniment is recommended)</td> </tr> <tr> <td>Jazz Performance(including Jazz Piano, Jazz Bass, Jazz Drum, Jazz Guitar / Orchestral)</td> <td>Play without accompaniment</td> </tr> <tr> <td>Singer Songwriting</td> <td>Self-accompaniment is recommended</td> </tr> </tbody> </table> | Majors | Details | Film(Theory·Directing·Staff), Directing(Theater) | Self-introduction(Video) and portfolio | Theater(Acting), Musical(Acting) | Self-introduction(Video) and acting video | Vocal music | Italy or German song(singing by memorized is recommended) | Korean Traditional Music (except Theory and Composition) | Korea or home country's traditional instrument or vocal (Self-accompaniment is recommended) | Jazz Performance(including Jazz Piano, Jazz Bass, Jazz Drum, Jazz Guitar / Orchestral) | Play without accompaniment | Singer Songwriting | Self-accompaniment is recommended |
| Majors | Details | | | | | | | | | | | | | | |
| Film(Theory·Directing·Staff), Directing(Theater) | Self-introduction(Video) and portfolio | | | | | | | | | | | | | | |
| Theater(Acting), Musical(Acting) | Self-introduction(Video) and acting video | | | | | | | | | | | | | | |
| Vocal music | Italy or German song(singing by memorized is recommended) | | | | | | | | | | | | | | |
| Korean Traditional Music (except Theory and Composition) | Korea or home country's traditional instrument or vocal (Self-accompaniment is recommended) | | | | | | | | | | | | | | |
| Jazz Performance(including Jazz Piano, Jazz Bass, Jazz Drum, Jazz Guitar / Orchestral) | Play without accompaniment | | | | | | | | | | | | | | |
| Singer Songwriting | Self-accompaniment is recommended | | | | | | | | | | | | | | |

Online Korean Language Test Notice

- 1) The Freshman applicants with TOPIK 1 or 2 / without TOPIK (Excluding English Track)
- 2) Date: November 4, 2023(Sat.) 10:00~
- 3) Test: Speaking test (equivalent to the TOPIK Exam)
- 4) Admission criteria: 60 Points (out of 100)
- 5) Exemptions
 - Government scholarship holders with TOPIK level 1 or above
 - Applicants with the recommendation from the president/dean of the partner universities with TOPIK level 1 or above
- 6) A pre-inspection is conducted before the Online Korean Language Test, and applicants who may not attend the pre-inspection, are not qualified to take the test.

Review Notes

- 1) Applicants can be successful only if they meet the requirements, according to the selection method and procedure.
- 2) Applicants who unfulfilled the eligibility standards, incomplete document submitters, absentees for the interview, malpractitioner, and undefined ID holders will be excluded from the review process.
- 3) Applicants who did not take the Online Korean Language Test or if the result of the Online Korean Language Test is below 60 Points will not be accepted.
- 4) If applicant for practical screening meets any of the following below, applicant will be excluded from evaluation.
 1. Those who do not submit practical screening materials.
 2. Those who do not meet the criteria for submitting practical screening materials.
 3. Those whose practical screening result is less than 60(out of 100).
- 5) Any unspecified details on the admission guideline shall abide by the admission regulation for the international students.

05 Admission Procedure

Application Period

October 2, 2023(Mon.) 10:00 ~ 20(Fri.) 17:00



Application Fee

| Unit | Fee | | Fee Refund |
|---|-----------------------|--------------------|---|
| All (Except Arts) | 1 st stage | 60,000 KRW | → In case of failure in the 1 st stage of admission, the application fee for the 2 nd stage will be refunded. → Please inform us if you do not have a Korean bank account. |
| | 2 nd stage | 60,000 KRW | |
| | total | 120,000 KRW | → In case of refunding the application fee through overseas remittance, the overseas remittance fee should be paid by the recipient, so the actual amount received may be less than the 2 nd stage fee |
| Arts(Except Department of Literary Creative Writing) | 1 st stage | 60,000 KRW | |
| | 2 nd stage | 100,000KRW | |
| | total | 160,000 KRW | |

→ No refund for the paid application fee.

06 Required Documents

Period: October 2, 2023(Mon.) ~ 26(Thur.)

How to Submit: All required documents listed below must be submitted either by post or in person

Address: (16890) Global Education Team 1, #317 International Hall, 152 Jukjeon-ro, Suji-gu, Yongin-si, Gyeonggi-do, Korea

| Required Documents | Freshmen | Transfer | Note |
|---|----------|----------|---|
| 1) Application form, personal statement* and study plan* | ○ | ○ | - Must be signed by applicant |
| 2) Certificate of (expected) graduation from high school | ○ | | Chinese high school(expected) graduates - Refer to p.72: Additional Notes for Documents Submission - For high school(expected) graduates from other than China - Apostille or Consular authentication(Korean or English) |
| 3) Academic transcripts from high school | ○ | | - Notarized translation, Apostille or Consular authentication (Korean or English) |
| 4) Certificate of enrollment status from college/university | | ○ | Chinese college/university graduates - Graduation certificate: Submit a printed copy of the online certificate(English) or consular authentication(Korean or English) - Transcript*: notarized translation or consular authentication (Korean or English) |
| 5) Academic transcript from college/university | | ○ | For graduates from college/university other than China Apostille or consular authentication(Korean or English) |
| 6) Certificate of total credits for graduation | | ○ | - Submission of documents(in Korean or English) indicating the credits required for graduation from the previous college/university or department(A printout of the contents on the website or the confirmation of the previous college/university can be submitted) - For college/university graduates(to be), it can be replaced by the certificate of graduation(due) |
| 7) Transcript of Korean Language Program from the DKU Global Education Center | | ○ | - Transfer applicants who don't have TOPIK only |
| 8) Copy of passport of applicant | ○ | ○ | - The Applicant's passport must be valid for at least a year or more. |
| 9) Copy of the identification (Passport, Local ID, etc) | ○ | ○ | - Copy of the identification(Passport, Local ID, etc) |
| 10) Copy & notarization of the certificate of family relations (family register) (A notarized translation of the household register must be submitted for Chinese only) | ○ | ○ | - The certificate of family relations issued by the relevant country's government - If the parents are divorced or deceased, documents by government issued to prove this is required. - Must be translated into English |
| 11) Copy of the alien registration card or certificate | ○ | ○ | - Alien registration cardholders only |
| 12) Financial proof documents | ○ | ○ | - A Certificate of bank balance under the name of the applicant or the applicant's parents - The D-4 visa holder is recommended to submit a Certificate of bank balance under the applicant's name issued by the domestic bank - Additional balance details can be requested for a specific period of time in order to prove financial capacity |
| 13) Official agreement for academic verification* | ○ | ○ | [Freshman] Should submit copies for high school [Transfer] Should submit copies for college(Univ.) |
| 14) Copy of the TOPIK certificate | ○ | ○ | - Certificate holders only |
| 15) Copy of the TOPIK admission ticket | | ○ | - For TOPIK Applicants only(Among transfer applicants) |
| 16) Copy of the certificate of facts concerning the entry to and exit from Korea | ○ | ○ | - Visa holders only (D-2, D-4, F-Visa) |
| 17) Copy of the official transcript of TOEFL iBT or IELTS | ○ | ○ | - English Track Only |
| 18) Dormitory application form | ○ | ○ | - Applicants Only |
| 19) Practical screening materials | ○ | ○ | - For art applicants only (Except Department of Literary Creative Writing) |

- All documents must be issued within 6 months from the starting date of the online application..(In the case of a Certificate of Bank balance, please refer to the below.)
- The Certificate of Bank balance must be issued within 30 days from the starting date of the online application. In case of the expiration date is stated on the document, will be accepted as the Certificate of Bank balance by the expiration date. (The document must be issued within six months from the starting date of the online application.)
- Apostille, consular certification, or notarized translation are not required when the original copy of the transcript issued by the affiliated high school or university is written in Korean or English.
- All of the files must be submitted in order.
- All documents submitted must be the original files, in case of a copy file is submitted, the issuing agency or the Global Education Team 1 of the International Affairs are to verify with the original.
- International applicants must apply after inquiring about the school admission. (Additional documents might be needed for visa application.)
- Official record of foreign language test must be valid at the time of application.
- For those who are sponsored by government scholarship must submit additional documents related to the scholarship verification.
- The document with (★) should be downloaded and completed from the online application website (<http://jinhakapply.com>) after application fee payment.
- Applicants completing more than 1 of 4 years of regular university should submit all the documents to confirm completed credits, required semesters for graduation, and necessary credits for a diploma.
- Applicants must submit official transcripts with grading scales for each year of post-secondary education. If detailed transcripts are not available, an additional confirmation statement from the education institution must be submitted. (Notarized translation- Korean or English.)

Additional Notes for Documents Submission

1. Certificate of (Expected) Graduation

| Classification | Freshmen/Transfer | Required Document |
|----------------|--|---|
| Freshmen | Chinese general high school | 1. Graduates: Online CHSI Certificate (English) 2. Expected Graduates: Certificate of Expected Graduation with Consular authentication |
| | Vocational Secondary School Graduates in China | 1. Online Issuance ○ Certificate of Graduation: - Issued from the local education authority (only acceptable if authenticity of the certificate can be verified online) - Verification by the Consulate General of the Republic of Korea in China 2. Offline Issuance ○ Certificate of (expected) Graduation: - Issued from the local education authority → Verification by the Consulate General of the Republic of Korea in China + School Information Confirmation Form* ○ Certificate of (expected) Graduation: - Issued from the school → verification by the Municipal Education Bureau → Verification by the Consulate General of the Republic of Korea in China + School Information Confirmation Form* Ministry of Human Resources and Social Security of the People's Republic of China (http://www.mohrss.gov.cn/) → Online verification copy (Only acceptable if authenticity of the documents can be verified online) → Verification by the Consulate General of the Republic of Korea in China |
| | Recognized Accrediting School Graduates in China | Certificate of Graduation issued from the school → Verification by the Consulate General of the Republic of Korea in China + A copy of School Establishment Permit (Notarization is not required) * School Establishment Permit is refers to 'The People's Republic of China Certificate of Legal person of Institution' or 'Certificate of Non-state Education Promotion Law of the People's Republic of China' and academic curriculum is only recognized |
| | Transfer Admitted Students | 1. Associate/Bachelor's Degree (expected) holder: Certificate of Graduation ○ University(College) in China: Online CHSI Certificate (English) ○ University(College) in Korea: Certificate of Graduation ○ University(College) other than China and Korea: Apostille or consular authentication 2. 4-Year University current students or students who take a leave of absence: High School Certificate of Graduation + Certificate of Enrollment(Expulsion, Absence) ○ China: Online CHSI Certificate (English) ○ Other countries: Apostille or consular authentication ○ For Vocational Secondary School or recognized accrediting schools graduates, the above additional documents must be submitted |

- ★ marked documents must be downloaded from the Application Website.(<http://jinhakapply.com>)
 - Applicants who have submitted their high school Certificate of Expected Graduation, may issue a Certificate of Admission (COA) after submitting their High School Certificate of Graduation. (Online CHSI Certificate, Apostille or Consular Authentication.)
 - Transfer applicants who have submitted their former university(college) Certificate of Expected Graduation or Certificate of Expected Course Completion, may issue a Certificate of Admission (COA) after submitting their former university(college) Certificate of Graduation or Certificate of Course Completion.(Online CHSI Certificate, Apostille or Consular Authentication.)
- All the foreign language documents except English and Korean should be submitted with a notarized copy either translated in English or Korean, Certificate of Translator and ID of Translator.(Certificate of Translator and ID of Translator is not required to be notarized.)
 - In cases in which there are very special circumstances, such as early graduation of excellent students, skipping a grade, or discarded data of enrollment, applicants should have documents issued by the relevant schools and submit them before the application deadline.
 - In cases where applicants have a different name from the name on the document, they have to submit a document from the relevant government organization to confirm their identities.
 - There will be an individual request to submit additional documents during the admission review, if necessary.
 - All the documents submitted are not returnable.
 - Financial Certification

| Classification | Required Document |
|--|--|
| When an applicant or his/her parents are guarantors of sufficient funds. | → A copy of the affidavit of support (University form) → A copy of the bank balance under the name of an applicant or parents issued by the domestic or international bank. (equivalent to 20,000,000 KRW) → Additional balance details can be requested for a specific period to prove financial capacity |
| When receiving a scholarship sponsored by outside organizations | → A confirmation document for the Scholarship (issued by the sponsoring institute) |

- Please be aware that additional documents such as proof of final academic credential and certificate of bank statement will be required to submit to Korean Embassy(or Immigration office) when applying for D-2 VISA(or to switch from a D-4 to a D-2 VISA).
→ The student will provide the required documents himself/herself.

Documents to be submitted under the Apostille Convention

Apostille Convention: It specifies the modalities through which a document issued in one of the signatory countries can be certified for legal purposes in all the other signatory states.

→ Convention Abolishing the Requirement of Legalization for Foreign Public Document

How to Submit: Obtain Apostille confirmation from an agency designated by the government (For Korea it will be the Ministry of Foreign Affairs and Trade) of the relevant country and submit it with the confirmation letter.

Apostille Information Page: (https://www.0404.go.kr/consulate/consul_apo.jsp)

Online Application

1. The application form must be filled out by the student himself/herself.
2. Please be reminded to check carefully before making a payment of an online application as all the input details including applying major is not adjustable once the online application is completed.
3. The application will become into effect immediately once the payment of the application fee is successfully made and all applicants will be given the test identification slip with a personal candidate registration number which is to be printed out and carried with an ID card (Passport or Certificate of Alien Registration) on the day of written exam and interview.
4. Any mistakes in registering wrong application details including personal information, spelling mistakes are the candidate's responsibility.
5. Among those who have completed the online application, if additional official language transcript are submitted at least 1 week prior to the final announcement, scholarships corresponding to the new transcript will be provided.
6. Test identification slip can be downloaded and printed out through the DKU admission homepage.
7. When the address filled in the application form is changed during the review, the office of International Affairs, Jukjeon Campus should be informed. Any disadvantage (cancellation of acceptance, etc) caused by wrong contact details will be the applicants' responsibility.
8. It is not eligible to apply for the applicants who are unable to study owing to a hereditary anomaly or innate disease, or applicants who continually need others' support at class (for experiments, practicums, etc).
9. For detailed inquiries, please refer to the information on the application form reception website.

Document Submission

1. All documents must be issued within 6 months from the starting date of the online application.(In the case of a Certificate of Bank balance, please refer to the below.)
2. The Certificate of Bank balance must be issued within 30 days from the starting date of the online application. In case of the expiration date is stated on the document, will be accepted as the Certificate of Bank balance by the expiration date. (The document must be issued within six months from the starting date of the online application.)
3. Admission will be revoked if the application form or submitted documents are found as including false or dishonest information, even for the students been already admitted to the university.
4. DKU will only provide the certificate of admission(COA) for the visa application of successful candidates and it is the students' responsibility to get a student visa. Failure in receiving a student visa will result in the cancellation of admission.
5. All applicants shall fully cooperate with any inquiries related to the applicant's academic background from DKU.

Examination

1. All the matters unspecified in this admission guide will follow the principles of freshmen admission regulations, and the admission test result will not be publicized.
2. Online Korean Language Test is conducted by Skype.
3. On the day of the test, you cannot take the test with any wireless communication devices or electronic devices around you except electronic devices(Computer, Phones, etc.) for Skype, and any revealed case will be treated as cheating.
4. All applicants should carry their test identification slip, ID card (passport, certificate of alien registration, driver's license) on the test day.

K-LEAP(Korean Language Enhancement Program)

1. The Freshman applicants(Korean track) who don't have TOPIK 4 need to complete K-leap courses for the 1st and 2nd semesters to improve your Korean Language Proficiency level.
2. 1st semester: students need to complete 7 K-leap courses(18 credits) 2nd semester: students need to complete 3 K-leap courses(7 credits) and take major or elective courses according to the table of academic curriculum.
3. The K-leap courses are recognized as general elective credits.
4. Transfer applicants/English track applicants are exempted from K-leap courses.

Final Announcement and Registration

1. Applicants can find the admission result at the DKU admission homepage (<http://ipsi.dankook.ac.kr>) with their candidate registration number and D.O.B.
2. All applicants should be fully understood and well-acquainted with admission rules and regulations for successful candidate.
3. All notices will be announced through the DKU admission homepage(<http://ipsi.dankook.ac.kr>).
4. Tuition is only payable in Korean currency(KRW).
5. Transfer students who have enrolled in another university must withdraw by February 29, 2024. (Including Dankook university students.)

Graduation Requirement

All students must submit TOPIK level 4 or above one semester before graduation (N/A to English track programs)

Transfer students: According to the former university major and earned credits, accredited credits will be determined. If the acquired credits are less than the required(level), the number of the terms for the coursework may increase accordingly.

Restrictions on Regular Course Enrollment(Not applicable to English track)

Credit Restrictions Standards [Relevant government scholarship holders and applicants recommended by the president (or dean) of sister universities]

- Above TOPIK Level 3: No restrictions
 - TOPIK Level 2: Allowed to enroll up to **12 credits** per regular semester
 - TOPIK Level 1: Allowed to enroll up to **6 credits** per regular semester
- When submitting a higher TOPIK certificate, the limit of applicable credits will accordingly be changed from the next semester.
- For those who took the university's Online Korean Language Test will not have the limit for credits

Others

1. In accordance with 『the National Health Insurance Act』, all international students who have successfully passed the special screening for foreigners, whose parents are both foreigners, are implemented as local subscribers of national health insurance.
2. All the details of the application outlines will not be given to the individual candidates, so that disadvantages caused by applicants' unawareness of details will be the applicants' responsibility.
3. After admission into the university, all matters follow the university's regulations.

08

Scholarships and Tuition Fees

Scholarship for Freshman

<Korean Track>

| Criterion | Scholarships | |
|--|--|---|
| TOPIK Level 6 | 60% waiver on tuition (For 4 years) + Dormitory (For 4 years) → The GPA should be over 3.7/4.5 in the previous semester | |
| TOPIK Level 4 or 5 | 50% waiver on tuition (For 1 semester) + Dormitory (For 1 semester) | |
| TOPIK Level 3 | 30% waiver on tuition (For 1 semester) + Dormitory (For 1 semester) | |
| Applicants who pass the Online Korean Language Test | DKU Language Program Graduates (completed more than 6 months) | 20% waiver on tuition (For 1 semester) + Dormitory (For 1 semester) |
| | Others | 15% waiver on tuition (For 1 semester) + Dormitory (For 1 semester) |
| Among transfer applicant, DKU Language Program student who completed Level 3 or above or who may submit a transcript for the DKU Language Program Level 4 or above | DKU Language Program Graduates (completed more than 6 months) | 20% waiver on tuition (For 1 semester) + Dormitory (For 1 semester) |
| | Others | 15% waiver on tuition (For 1 semester) + Dormitory (For 1 semester) |

- Not applicable to the KGSP or government scholarship recipient.
- Scholarship payment criteria and payment amount may vary depending on the university's scholarship system.
- Dormitory Scholarship: Only available for a quadruple room.
- Double room: May be assigned according to the number of room availability. (Students are required to make payment for a double room.)

<English Track : Global Business Administration>

| Minimum Scholarship Requirements | Scholarships |
|--|--|
| TOEFL Score iBT 71(or higher) or IELTS 5.5(or higher) | 30% of tuition waiver (For 4 years) Not applicable to the students with GPA under 3.0 in the previous semester To receive scholarships, students must complete 3 consecutive semesters after admission |
| TOEFL Score iBT 80(or higher) or IELTS 6.5(or higher) | 50% of tuition waiver(For 4 years) Not applicable to the students with GPA under 3.1 in the previous semester To receive scholarships, students must complete 3 consecutive semesters after admission |
| TOEFL Score iBT 112(or higher) or IELTS 7.5(or higher) | 75% of tuition waiver(For 4 years) Not applicable to the students with GPA under 3.3 in the previous semester To receive scholarships, students must complete 3 consecutive semesters after admission |
| TOEFL Score iBT 115(or higher) or IELTS 8.5(or higher) | Full Scholarship(For 4 years), Dormitory(For 4 years) Not applicable to the students with GPA under 3.5 in the previous semester To receive scholarships, students must complete 3 consecutive semesters after admission |

- Not applicable to the KGSP or government scholarship recipient.
- The scholarship payment criteria and payment amount may vary depending on the university's scholarship system.
- Dormitory Scholarship: Only available for a quadruple room.
- Double room: May be assigned according to the number of room availability. (Students are required to make payment for a double room.)

<English Track : Mobile System Engineering>

| Minimum Scholarship Requirements | Scholarships |
|--|--|
| TOEFL Score iBT 80(or higher) or IELTS 6.5(or higher) | 50% of tuition waiver(For 4 years) Not applicable to the students with GPA under 3.1 in the previous semester To receive scholarships, students must complete 3 consecutive semesters after admission |
| TOEFL Score iBT 112(or higher) or IELTS 7.5(or higher) | 75% of tuition waiver(For 4 years) Not applicable to the students with GPA under 3.3 in the previous semester To receive scholarships, students must complete 3 consecutive semesters after admission |
| TOEFL Score iBT 115(or higher) or IELTS 8.5(or higher) | Full Scholarship(For 4 years), Dormitory(For 4 years) Not applicable to the students with GPA under 3.5 in the previous semester To receive scholarships, students must complete 3 consecutive semesters after admission |

- Not applicable to the KGSP or government scholarship recipient.
- The scholarship payment criteria and payment amount may vary depending on the university's scholarship system.
- Dormitory Scholarship: Only available for a quadruple room.
- Double room: May be assigned according to the number of room availability. (Students are required to make payment for a double room.)

Scholarship for Korean Track(from the 2nd semester)

| GPA | TOPIK | | | Notes | |
|---|--|----------------------------------|----------------------------------|-----------------------------------|---|
| | Students with TOPIK 1/2 or without TOPIK | TOPIK 3 | | | TOPIK 4 or above |
| Year 1 & 2 | | Year 3 & 4 | | | |
| Highest GPA from the previous semester | - | - | - | 100% waiver on tuition, Dormitory | ※ Living support expenses (80% of dormitory fee) will be applied after one year of admission. |
| Over 4.0 from the previous semester | 20% waiver on tuition, Dormitory | 50% waiver on tuition, Dormitory | 20% waiver on tuition, Dormitory | 60% waiver on tuition, Dormitory | |
| Over 3.5~4.0 from the previous semester | 15% waiver on tuition, Dormitory | 40% waiver on tuition, Dormitory | 15% waiver on tuition, Dormitory | 50% waiver on tuition, Dormitory | ※ Students who cancel the dormitory application due to personal circumstances are not eligible to receive the living support expenses of the dormitory(80%) |
| Over 3.0~3.5 from the previous semester | 10% waiver on tuition, Dormitory | 30% waiver on tuition, Dormitory | 10% waiver on tuition, Dormitory | 40% waiver on tuition, Dormitory | ※ Dormitory fees or living support expenses will not be provided for students who are not eligible to apply for dormitory application |
| Over 2.5~3.0 from the previous semester | - | Dormitory | - | 30% waiver on tuition, Dormitory | |

- Full scholarship may be awarded to the students with the highest GPA from the previous semester. (1 student with the highest GPA in each year(1~4), TOPIK 4 holder.)
- Not applicable to the KGSP or government scholarship recipient.
- Scholarship payment criteria and payment amount may vary depending on the university's scholarship system.
- Dormitory Scholarship: Only available for a quadruple room.
- Double room: May be assigned according to the number of room availability. (Students are required to make payment for a double room.)

TOPIK Scholarship

| Category | Scholarship |
|---|-----------------------|
| Students who take the TOPIK (Year 1 students only) | TOPIK Application fee |
| Students who acquired TOPIK 4 for the first time (Year 1 students only) | 500,000 KRW |
| Students who acquired TOPIK 4 for the first time (Year 2 & 3 students) | 300,000 KRW |

→ TOPIK Scholarship and application fee support cannot be duplicated.

Tuition fees for 2023 (Tuition fees are subject to change every year)

| Area | College | Tuition Fee (Admission costs) | Tuition Fee |
|------------------------------------|--|-------------------------------|----------------|
| Humanities | Jukjeon : Humanities, Law, Social Science(excluding Media Communications), Business and Economics (excluding International Studies) | 180,000KRW | 4,031,000KRW |
| | Cheonan : Foreign Languages, Health Science(Public Policy, Social Welfare, Environmental Resource Economics, Health administration), Arts(Literary Creative Writing) | | |
| Science | Jukjeon : Social Science(Media Communications), Software Convergence(Information Statistics) | | 4,756,000KRW |
| | Cheonan : Natural Sciences(Mathematics) | | |
| Sports | Cheonan : Sports Science | | 4,881,000KRW |
| Engineering | Jukjeon : Engineering, Software Convergence (Software Science, Computer Engineering) | | 5,308,000KRW |
| | Cheonan : Natural Sciences(excluding Mathematics), Life Sciences and Biotechnology | | |
| Arts | Jukjeon : Music & Arts | | 5,530,000KRW |
| | Cheonan : Arts(excluding Literary Creative Writing) | | |
| International Studies(Humanities) | Jukjeon : Business and Economics(International Studies) | | 6,076,000KRW |
| International Studies(Engineering) | Jukjeon : Software Convergence(Mobile Systems Engineering) | | 6,479,000KRW |
| Medical Science | Cheonan : Medical Science (Saudi government scholarship program students only) | | 21,820,000 KRW |
| Health | Cheonan : Health Science(Biomedical Laboratory Science, Physical Therapy, Psychotherapy) | | 4,820,000 KRW |

09

Information on Dankook University Dormitory



Jukjeon Campus

Facility

| Building | Room status | Capacity (ppl) |
|--------------|------------------------------------|----------------|
| Jiphyeonjae | 19 twin rooms, 102 quadruple rooms | 446 |
| Woongbi Hall | 6 single rooms, 534 twin rooms | 1,074 |
| Jilligwan | 3 twin rooms, 229 quadruple rooms | 922 |

Inquiry : Dormitory Office (☎ 031-8005-2906~7, Website : domi.dankook.ac.kr)

Cheonan Campus

Facility

| Building | Room status | Capacity (ppl) |
|-------------|-----------------------------------|----------------|
| Danwoo Hall | 6 single rooms, 504 twin rooms | 1,014 |
| Bongsagwan | 2 twin rooms, 230 quadruple rooms | 924 |

Inquiry : Dormitory Office(☎ 041-550-1162~4, Website: chdomi.dankook.ac.kr)

Price(Fall 2023 Semester)

1. Jiphyeonjae (Jukjeon Campus)

| Room Type | | Cost(KRW) | Deposit(KRW) | Total(KRW) | Note |
|------------------------|-----------|-----------|--------------|------------|------------------|
| 6 Months (176 days) | Twin | 2,077,400 | - | 2,077,400 | 6 Days Reduction |
| | Quadruple | 1,271,600 | | 1,271,600 | |

2. Jilligwan (Jukjeon Campus)

| Room Type | | Cost(KRW) | Deposit(KRW) | Total(KRW) | Note |
|--------------------|-----------|-----------|--------------|------------|------------------|
| 6 Months(176 days) | Quadruple | 1,371,900 | 100,000 | 1,471,900 | 6 Days Reduction |

3. Bongsagwan (Cheonan Campus)

| Room Type | | Cost(KRW) | Deposit(KRW) | Total(KRW) | Note |
|--------------------|-----------|-----------|--------------|------------|------------------|
| 6 Months(176 days) | Quadruple | 1,371,900 | 100,000 | 1,471,900 | 6 Days Reduction |

- Dormitory fees will be waived based on scholarship regulation.
- Dormitory fees are based on Fall 2023 Semester.(Dormitory fees are subject to change every semester.)
- Applicants who wish to stay in the campus dormitory must submit a dormitory application form along with the submitting application for admission. **『If the document is not submitted, the applicant will be seen as having no intention to live in the dormitory.』**

10 Important Visa Information

- Please be aware that additional documents such as proof of final academic credential and certificate of bank statement will be required to submit to Korean Embassy(or Immigration office) when applying for D-2 VISA(or to switch from a D-4 to a D-2 VISA).
- The student will provide the required documents himself/herself.

D-4 VISA holder

- Students whose D-4 VISA expire before February 2023, must register for additional Korean language course to extend D-4 VISA.
- The required documents for changing to D-2 VISA should be submitted by the early of February, 2024.

→ Required documents

1. Application form (photo attached), Alien Registration Card(D-4)
2. Revenue stamp(₩100,000), fee ₩30,000(cash)
3. Copy of passport
4. Certificate of Admission
5. Tuition payment receipt
6. Certificate of graduation
7. Certificate of attendance
8. Financial proof (certificate of balance in your name issued by a domestic bank)
9. Certificate of residence

- D-4 student visa holders are not allowed to leave Korea before the visa is successfully changed to D-2 status.

Overseas residents (New application for D-2 visa)

- Office of International Affairs will send the soft copy of the Certificate of admission and DKU business registration to the email address provided on the application form for the applicants' visa application in the home country.

- Visa application can be made at the Korean consulate in any overseas country with the following documents.

→ Required documents

1. Application form (photo attached)
2. Copy of passport
3. Copy of DKU business registration
4. Certificate of admission
5. Certificate of graduation
6. Financial proof

- Please check with the local Korean consulate as the required documents may be different based on the applicant's nationality and the country of application or visit the consulate to apply for D-2 visa directly.



Jukjeon Campus



Cheonan Campus



JUKJEON CAMPUS MAP | 죽전캠퍼스 · 竹田校区



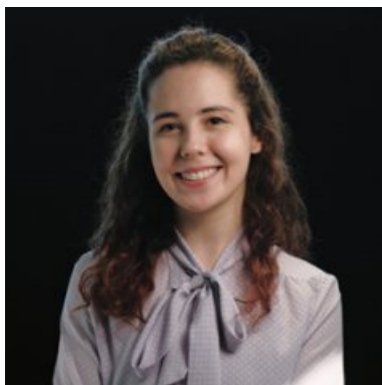
- 01. Main Gate
正门
- 02. Beomjeong Hall (University Administration)
梵亭馆(学校行政中心)
- 03. Toegy Memorial Central Library
退溪纪念中央图书馆
- 04. Hyedang Hall (Student Union)
惠堂馆(学生会馆)
- 05. Software ICT Hall
软件ICT馆
- 06. Media Center
多媒体中心
- 07. Education Hall
师范馆
- 08. Business and Economics Hall
商经管
- 09. Humanities Hall
人文馆
- 10. College of Law Building
法学馆
- 11. Graduate Studies Hall
大学院栋
- 12. Arts Hall
艺术馆
- 13. ROTC
学军预备军团
- 14. Gymnasium & Performing Arts Center
体育馆
- 15. Main Stadium
大运动场
- 16. Nampa Music Hall
兰坡音乐馆
- 17. Peace Square
和平广场
- 18. Bear Statue
熊像
- 19. Social Science Hall
社会科学馆
- 20. College of Engineering - Building 1
第一工科技馆
- 21. College of Engineering - Building 2
第二工科技馆
- 22. College of Engineering - Building 3
第三工科技馆
- 23. Seok Juseon Memorial Museum
石宙善博物馆
- 24. Yeonmin Memorial Hall
延民纪念馆
- 25. Power Plant
发电站
- 26. Parking lot
停车场
- 27. Laboratories
综合实验栋
- 28. Laboratories, College of Architecture
建筑学实验栋
- 29. International Hall
国际馆
- 30. Futsal court
小型足球场
- 31. Tennis court
网球场
- 32. Waterfall park
瀑布公园
- 33. Co-founder Statue (Sir Beomjeong)
建校人雕像(梵亭张焯先生)
- 34. Co-founder Statue (Lady Hyedang)
建校人雕像(惠堂赵喜女士)
- 35. Deulsamgil (Waterway)
瀑布石阶
- 36. Welfare Building
福利中心
- 37. Glocal Industry-University Cooperation Hall
产学协力馆
- 38. Performing Arts (Dance) Hall
表演艺术(舞蹈)馆
- 39. Jibhyeonjae (Dormitory)
集贤斋(生活馆)
- 40. Woongbi Hall (Dormitory)
雄飞馆(生活馆)
- 41. Jilli Hall (Dormitory)
真理馆(生活馆)



CHEONAN CAMPUS MAP | 천안캠퍼스 · 天安校区



- 01. Main Gate
学校正门
- 02. Industry-Academia Cooperation Hall
产学协力馆
- 03. Yeonhakjae Dormitory
缘学斋(生活馆)
- 04. Danwoo Hall (Dormitory)
学士斋(生活馆)
- 05. Bongsan Hall (Dormitory)
檀友馆
- 06. Bongsan Hall (Dormitory)
奉仕馆(生活馆)
- 07. Wrestling Hall
格斗馆
- 08. Yulgok Memorial Library
栗谷纪念图书馆
- 09. Woori Bank
友利银行
- 10. Gymnasium
体育馆
- 11. Arts Hall
美术馆
- 12. Humanities / Liberal Arts Hall
人文馆
- 13. Main Stadium
大运动场
- 14. College of Public Service
公共人才学院
- 15. Social Science Building
社会科学馆
- 16. Outdoor Stage Arena
露天舞台
- 17. Student Union
学生会馆
- 18. College of Natural Science
自然科学馆
- 19. Engineering Hall
工科技馆
- 20. College of Bioscience
生命科学馆
- 21. College of Health & Science
保健看护馆
- 22. University Dental Hospital
牙科学院
- 23. Pharmacy Hall
药学院
- 24. Tennis court
网球场
- 25. Dankook Childcare Center
檀国托儿中心
- 26. Reservoir
檀大湖水
- 27. Parking lot
停车场
- 28. Bus stop
巴士站
- 29. Bear Statue
熊像
- 30. Dankook University Hospital
檀国大学医院
- 31. College of Medicine
檀国大学医学院



CANANI NUNES ISABELA



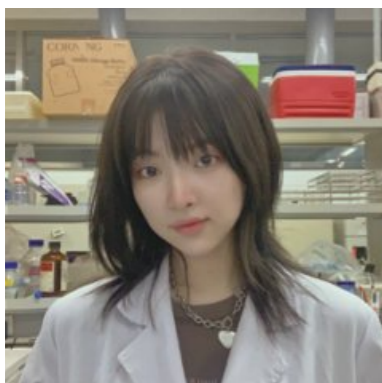
공연영화학부 20학번
정부초청외국인장학생

Coming to South Korea to attend university was a big journey for me. I had had this dream since 2015 when I was 18 years old, and through Dankook University, I got to make this dream come true in 2020. I was really scared, because my home country, Brazil, is literally on the other side of the world, so there are countless cultural differences. I was also scared because I was a little older than my classmates, me being 23 and most of them being 19-20. I was afraid we wouldn't get along or become close. But it turned out I became everyone's favorite "Unnie" and we all get along pretty well despite the language barrier, age, and cultural differences. I've met some amazing people here at Dankook University. I didn't know this before coming to Dankook, but it turns out Dankook has the best Musical Theater major in all of South Korea, and it shows. The people I see every day here are so incredibly talented it leaves me speechless. I didn't have much experience before coming here, but I've improved a lot in such a short amount of time, thanks to all the amazing professors here and the help of my classmates as well. I know I'm on the right path to becoming a great... whatever I'll become in the future (Actress? Dancer? Not sure yet...)

Before coming here, I have already met a few Korean, but there are always many barriers, especially when reading academic texts. I faced some difficulty because of the language, but everyone around me here at Dankook University was always willing to help me, for which I am incredibly thankful. Especially, the courses offer separate classes for foreigners, and I

think this was very important in my journey to maintaining a good GPA because those classes are made to accommodate the possible language barrier and make learning a pleasant experience for us. The teachers at the International Office were always of great help too. I am a person who usually has a lot of questions about how to register for a class, asking for help to print a document, etc. The International Office was always helpful, answering my questions quickly and always being kind and respectful.

My dream of studying in Korea might have taken a long to become true, but I can see now that it was the right time and the right decision to come when I came. Living abroad is an extraordinary experience. Every day I spend time here at Dankook University, I become more independent and grow as a person and professional. I still have a couple of years to study here, but thinking about this ending makes me sad already.



WANG QIANWEN



임상병리학과 16학번
대학원 임상병리학과
20학번

檀国大学所能带给我的是我来之前完全想不到的。不仅仅学到了知识,还有独立思考独立生活的能力,丰富了经历,以及与人沟通的能力,更有因为的这些带来的自信。

当时只身来到韩国,是带着各种疑惑,顾虑以及对未知的一丝恐惧。大学3年级的留学插班生,再加上留学生的身份难免心存担忧。但是檀国大学给了我太多意外的惊喜。

在学习上,学校的老师教学严谨负责,而且为了帮助我这个外国学生还会特意让学习好的学生们帮助我,给我介绍学习流程以及注意事项,以致于让我很快的就能适应学习生活。我们一起上课,一起整理笔记,一起吃饭,一起讨论。教会了我很多在韩国的生存技能,还尝试了美食,在轻松愉快的气氛中学习,效率以及效果都很好。学校的图书馆储备齐全,环境氛围都很适合在考试周刷题做好准备,

在生活上,学校的宿舍设备完善,对于外国学生还特别给予优惠政策。食堂卫生又美味,每天都有不一样的菜品,而且可以在手机上的学校App中查看。而且时会有发放小礼品来给考试周的学生们加油打气。学校当然也有丰富的社团和学生会可以参加,种类多样完全可以找到与自己兴趣相投的小伙伴。虽然一开始没有朋友但是参加了几次学校组织的留学生活动后也认识了很多和自己一样的留学生。

由于檀国大学良好的学习氛围以及学校老师们的认真负责,以及在这里愉快的经历,决定进入大学院继续深造。在我喜欢领域中,在导师的指导下,逐渐突破了自己,发掘了更多潜力与兴趣。在做实验以及撰写论文时练习了提前思考,迅速解决,多方面排除寻找问题等能力,见识了先进的医疗机械,以及意义显著的科研成就。

感谢檀国大学带给我的这一切,也很感谢在这里给我留下的美好回忆,如果再给我一次机会我只能说檀大,相见恨晚!



CLIFF LEE EN



무역학과
22학번

From a young age, I've been captivated by Korean TV shows, and this passion naturally evolved into a deep interest in Korean culture and a strong desire to experience life in Korea firsthand. It wasn't until I met a Korean friend that I found the encouragement and affirmation I needed to take this life-changing step. She recognized my talent for the Korean language and suggested that it would be a good idea for me to study and work in Korea. I began exploring my career path in earnest and finally decided to enroll in the Department of International Trade at Dankook University.

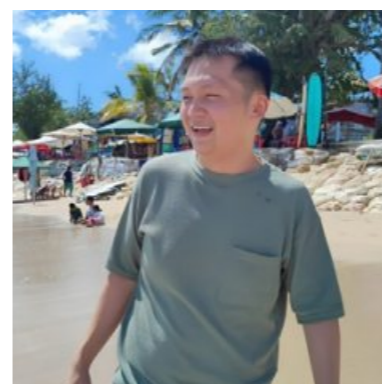
After thorough research and contemplation of various universities, I ultimately chose Dankook University, and it's been a decision I've never regretted. One of the most compelling reasons behind my choice was Dankook University's exceptional scholarship program. The university goes above and beyond to support international students like me, even providing free dormitories, which reduces my financial burden. Moreover, the teachers of the International Office, Global Education Team, have been incredibly helpful to international students like us. They were always quick to provide information and did so kindly to make sure we understood everything we needed.

After entering Dankook University, I discovered an array of additional advantages that reinforced my decision. The professors at Dankook University are not only knowledgeable but also remarkably considerate of foreign students. They try to create an environment where international students can adjust easily to the classroom, encouraging collaboration with Korean students on assignments and highlighting the importance of cooperation. Whenever needed, they also guide us toward valuable

opportunities such as internships, ensuring that our educational experience extends beyond the classroom.

Dankook University has a big campus with excellent facilities, including a well-stocked library and a student cafeteria that offers delicious meals at affordable prices. And also, provides plenty of study rooms that are perfect for both exam preparations and group discussions on assignments. These facilities are incredibly convenient and conducive to effective learning. Furthermore, the diversity of student clubs provides more opportunities to form meaningful connections with Korean students from various majors, allowing me to expand my horizons and engage with a wide range of people. Other than that, Dankook University has also provided many comprehensive career exploration and self-management programs that can assist us in charting a course for our future.

Dankook University has not only provided me with an excellent education but also an enriching cultural experience. Their dedication to supporting international students, coupled with their outstanding academic and extracurricular offerings, has made my time here truly memorable. If you're considering studying in Korea, I wholeheartedly recommend Dankook University as the ideal place to pursue your dreams.



JOSEAN KEVIN CHANDRA



SW융합학부
21학번

My journey with Dankook University started in early 2021, during the COVID-19 pandemic. I admit I had doubts about my choice, especially with Zoom bringing online learning everywhere. However, I was pleasantly surprised by the quality and effectiveness of the online lessons.

The global DKU team played a crucial role in my transition, especially since my major required me to be in Korea by mid-April. After I arrived, they helped me get used to campus life and gave me tips about the area. The International Office staff, in particular, were consistently helpful and welcoming to all international students, answering questions and concerns quickly.

Now, let's dive into my major, Mobile System Engineering. Although I had no programming experience, Dankook's curriculum proved to be very helpful. It took me from a beginner with no programming skills to a great coder, adept at various programming languages, software, and hardware. The professors, a group of dedicated educators, demonstrated kindness and openness. They went the extra mile, treating us to some lunches, offering office hours for clarification and explaining some chapters that we found difficult, and extending their support to international students like me.

Regarding social connections, I initially had many doubts. Yet, I made friends with peers from across the globe, including Indonesia, Malaysia, Vietnam, Mongolia, Uzbekistan, China, Japan, France, and many more. Surprisingly, Korean students were equally open to interactions, displaying curiosity about my culture and chosen major. As well I would suggest

some organizations in schools or clubs. I was involved in one of the school organizations which is ISA (International Students Affair). I made new friends and gained experience by helping students and taking care of some events.

Dankook University offers many on-campus facilities, from dormitories, gyms, and kitchens to libraries, study rooms, cafeterias, and many more, which I couldn't mention. The International Office remains a reliable resource for academic and non-academic concerns, responding promptly to inquiries. The university also hosts plenty of engaging events, enriching the student experience.

In conclusion, Dankook University has proven to be an excellent choice for my study in IT and systems technology. The modern facilities and welcoming campus atmosphere exceeded my expectations. My initial concerns disappeared and I continue to cherish the experiences and discoveries I've had while I've been here. In addition to being a university, Dankook University stood as a foundation for my future goals and dreams.



BUI NGOC BANG TAM



I had always dreamed of studying abroad in Korea someday, as I have a great love for Korean culture and language. Dankook University has made my dream come true since I first came here for the Korean Language Course. It was my first time ever going to a foreign country without my family, so I was scared and worried a lot because I knew I would have to handle everything on my own. However, from the very moment I reached DKU, I was surprised by the warm-hearted welcome of the teachers from the International Office, which rendered all of my concerns irrelevant. After graduating from the Korean Language Course, I decided to enroll in the undergraduate program here, majoring in Korean Language and Literature. By simultaneously pursuing both the language program and undergraduate program at Dankook University, I have come to appreciate the passion and care that all the teachers and professors at the university show, particularly towards foreign students. Professors here always hope that foreign students at DKU can have a wonderful time and gain valuable experiences while studying in Korea. Recognizing the challenges faced by foreign students in taking classes in Korean, professors consistently strive to create the most favorable learning conditions and are always willing to assist students dealing with academic difficulties or provide advice whenever needed. Additionally, there are some classes conducted in English alongside the Korean ones, which not only make me feel more comfortable at school but also help me improve my English skills while enhancing my proficiency in Korean.

Going back to the time when I first arrived in Korea, I was extremely shy and lacked proficiency in the Korean language, as well as social skills. Consequently, I had no confidence in communicating with Korean people. However, thanks to the teachers of the Global Education Team at the International Office, my study abroad experience in Korea became much more enjoyable and comfortable. They have always been readily available to assist us with any problems and have consistently strived to maintain the well-being of students while also safeguarding the interests of international students living in Korea. They have provided significant help with matters related to visa paperwork, dormitory issues, academic concerns, and more. Taking care of all international students' needs is undoubtedly a complex task, but they handle it brilliantly, which makes me deeply thankful for everything they have done for us.

Dankook University paved the way for an incredible start to my journey of exploring Korea. I hope that what I have shared above can help you make an informed decision when seeking a suitable study abroad environment for yourself.



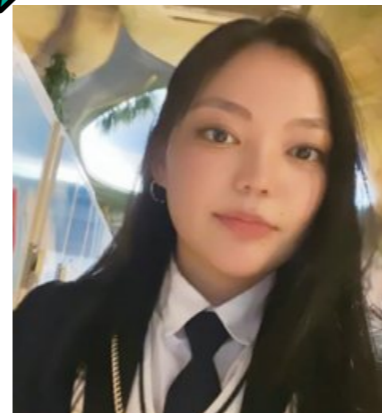
BOCKSBERGER ELIN



My journey at Dankook University began as a student at the Korean Language Center in 2022. In May 2023, I enrolled in the International Business major as a full-time student. Studying abroad in Asia had always been my dream, but I hesitated to take such a significant step due to fears of feeling lonely and lost in a foreign country, nearly 8,000 kilometers away from my home country. However, everything changed when I discovered Dankook University (DKU). Thanks to DKU's outstanding international team, which provides guidance and support to foreign students throughout the admission process and their entire academic journey, I always had a helping hand and someone I could rely on. Thanks to their assistance, I was able to pursue my dream without much worry. I recall my first day on DKU's campus. I was overwhelmed by its size and the numerous facilities it offered. Nevertheless, I quickly found my way around, thanks to other students who showed me around. Meeting my classmates for the first time alleviated any concerns I had about adjusting because everyone was incredibly welcoming and friendly. The same warmth and kindness extended to all the Korean teachers and professors I encountered. In addition to their impressive qualifications, they are always willing to lend a helping hand, making the learning experience much more enjoyable. Beyond providing quality education, Dankook University offers a wide range of extracurricular activities, that allow me to socialize with students from different majors and forge friendships with people from all around the globe. Furthermore, small events and annual festivals DKU

organizes for us students provide a welcome break from the sometimes strenuous exam period, allowing me to cherish memorable moments with friends.

To date, I have never regretted choosing this path and have adjusted exceptionally well. As I have a few more years left until graduation, I am also very excited for what more is to come. If you are seeking to make the most of your abroad experience just like me, I wholeheartedly recommend studying at Dankook University.



MUNKHTSETSEG TSOLMON



I came to Dankook University in Spring 2020. As an international student, everything was so new and challenging to my university experience. Luckily, the weather was similar to my country Mongolia. Ever since middle school, my parents had planted the seed of the idea of studying abroad in my head. I wanted a new experience even though; it could be challenging. I was frightened and excited at the same time. I was worried about my language limitation, but now I can confidently say that every part of my freshman year was memorable and rewarding. I learned so much about the school, the language, the culture, and new people during that time.

Because of the Covid-19 pandemic, my first semester had to start with online courses. This situation was unexpected for everyone, but all my helpers, such as the staff of the International Office, did their best so that we did not notice any change in the teaching approach, except that we do not attend the University campus for classes. The Office of International Affairs and Faculty Office remain in contact with us whenever I need something, and I have received immediate responses on the KakaoTalk. All the professors and university staff adapted well to this situation and immediately informed us about the further steps: how everything would go and what changes awaited us.

All classes were moved online, but the professors tried their best to teach us the same way as we were sitting in the same room with them on campus. Seminars were teaching through zoom and e-learning campus, where both my classmates and I were to share the views and results of our assigned activities. We have been offered tremendous support from Dankook University. They have been doing everything they can to help us complete these semesters without any problems. Most importantly, the courses were being taught as efficiently as possible during the pandemic. I am grateful that Dankook university has done everything to make students feel satisfied.

I appreciate my studies a lot, and I am still enjoying them. It has been a valuable experience for me to study at Dankook University and find my way in Korea, but it was challenging. If you have good motivation to start, that will keep you strong as if you are passionate about your career or, if you want to move to Korea, you will come over your problems, and the experience will be worth your struggles in the end. Otherwise, it might be stressful and overwhelming to deal with problems and difficulties. Finally, everyone will have a different, unique experience. If you are motivated but hesitant, as in everything else in life, please jump into it, then you will find your way!



BAKHRIDDINOV MUKHAMMAD SALOHID



The university is the place where people spend one of the unforgettable parts of their life and get known to the real life. My first step to adult life has started as choosing Dankook University in South Korea.

Yes, I had lots of thoughts and worries about leading an in different country and study at the university where I can meet fewer people from my country. As a newcomer, people have a variety of problems as well as culture shock. I don't say I have not experienced any of them, but the people and the atmosphere around me have helped me a lot to overcome those all. I remember the time when I came here, I didn't know anything about my studies and living here, but the International Office of Dankook University helped me out in any case. Even I haven't worried about either my extension visa or registering classes when I was a freshman. Whenever I had faced an issue, they always reached out to help and tackle the problem that I had. I can say I found someone, who I can bear when I am in South Korea, it doesn't matter whether it is a personal or general problem. In addition, the GTN group at the university also has a vital role for every exchange and international student life, as they help students to get used to Korean life, organize ceremonies and parties, and make small tours around the city. Those all help foreign students to know more about South Korea and make both Korean and foreign friends.

The next point that I have to say is the campus life. I love my campus area, and maybe that's a reason because I am into nature. Surrounding with small forest and tons of trees make campus look like the magic place. Placing the building also plays an important role as students like us can find classrooms easily. Reaching my dorm and to the library is super close, I guess that is a thing all students want. Having a good kitchen is also one big plus, and it allowed me to cook the food that I missed more. Sports facilities are another point that impressed me, as I do a workout there were good options to use the gym and outside the park whenever I needed them.

In one word, it wasn't easy to decide which university is proper for me, but eventually, I have done my choice right. Today, I am happy that I am a student of DKU and continuing my studies well. Hopefully, I also wish you can achieve what you want here at Dankook University with us.

Choose your University, choose your Life!

Official Agreement for Enrollment and Academic Credits (학력조회동의서) 学历调查同意书

尊敬的校领导：

此信为确认我曾参加过_____ (中文校名) 的课程所用。

(中国境内学校毕业生必须填写学校中文名)

我已申请成为韩国檀国大学(竹田或天安) 2020学年的新生, 我在此同意檀国大学适当地对我的学校档案进行查证。

在此,我请求,在檀国大学为了查证我的入学情况和成绩联系母校时,请母校提供充分的援助。

To whom it may concern

This letter is to confirm that I attended _____ (School Name) .

I have applied to Dankook University in (Jukjeon or Cheonan), South Korea for 2020 academic year and I agreed that Dankook University could rightfully make a request to you for my school records.

In this regard, I would like to ask you to provide full assistance to Dankook University when they contact you regarding verification of enrollment and transcript.

Name 姓名: _____

Date of Birth 出生日期: _____ / _____ / _____ (day日/ month月/ year年)

Date of admission(or transfer) 入学(或转学)日期: _____

Date of graduation(or withdrawal) 毕业(或休学)日期: _____

School Address 学校地址: _____

Country 国家: _____

School Website学校官网: _____

Name and E-mail of Person in Charge 负责人姓名及E-mail地址: (Name 姓名) _____
(E-mail 电子邮箱)

Telephone Number 电话号码: _____

(cf. State + Province + Region + Telephone Number) (+86+区号+电话号码)

School Fax number 学校传真号码: _____

(cf. State + Province + Region + Fax Number) (+86+区号+传真号码)

Sincerely yours,
敬启

Signature 签名: _____ Date 日期: _____

Affidavit of Financial Support

재정보증서 (财政保证书)

| | | | |
|-----------------------------|---|----------------------------|--------------------------|
| Korean Name (申请人韩国名字) | Family(Last/Sur) name | First name | Middle name(in full) |
| English Name (申请人英语名字) | Family(Last/Sur) name | First name | Middle name(in full) |
| Date of Birth (出生年月) | Place of Birth (出生地) | | |
| Gender (性别) | <input type="checkbox"/> Male (男) <input type="checkbox"/> Female (女) | Nationality (国籍) | |
| Marital Status (婚姻状况) | <input type="checkbox"/> Single (未婚) <input type="checkbox"/> Married (已婚) | Present Occupation (职业) | |
| Permanent Address (永久住址) | | | |
| E-mail Address (通讯地址) | | | |
| Telephone Number (电话号码) | in Korea (韩国内) | | in your own country (中国) |
| | () - () - () | | () - () - () |

You and your sponsor must provide for your educational and living expenses for the duration of your entire educational program at Dankook University. Also, educational and/or living expenses must be provided for your husband or wife and/or children who will be accompanying you.

Please attach a bank certification indicating that either you or your sponsor have at least KRW 20,000,000 for at least a period of one month in your or your sponsor's account.

在檀国大学滞留期间所需学费生活费必须由学生本人或财政保证人支付, 这笔滞留费必须达到能够支付陪同家人的情况下家人的滞留费的金额。次财政保证书须和能够证明滞留费的下列文件一起提交。

本人或者财政保证人的韩币20,000,000以上的国内银行存款证明书(以前一直存入在银行)或者内国人(韩国人)的财政保证书。

If you are not paying for your own educational and living expenses, please indicate the person or organization who is paying for you.

如果本人不能保证在檀国大学的滞留费的话, 请填写能够给予财政保证的人或机关。

| | |
|------------------------------------|--|
| Name (财政保证人 姓名) | |
| Relationship to Applicant (跟申请人关系) | |
| Occupation (职业) | |
| Address (地址) | |
| Telephone Number (电话号码) | |

"I guarantee that the amount of US\$ will be available for the above named applicant and/or husband or wife and/or children for the entire duration of this program."

本人必须承诺支付上述檀国大学申请人和家庭人员在檀国大学滞留期间所需费用。

Signature (签名) _____ Date (日期) _____



자기소개서

| | |
|------|--|
| 지원학과 | |
| 성명 | |

1. 자기소개에 도움이 될 만한 사항을 구체적으로 쓰십시오 (가정환경, 성장과정, 학교 및 지역환경 등).

2. 우리 대학에 지원한 학부(과)를 희망하는 이유, 입학 후 자기계발 및 학업 계획, 졸업 후의 자신의 진로계획에 대해 쓰십시오.



A letter of self-introduction

| | |
|------------------|--|
| Registration No. | |
| Major | |
| Name | |

1. Write your personal information that you want considered as part of your admission application. You might include exceptional hardships, challenges, or opportunities that have shaped or impacted your life, your personal and educational environment.

2. What motivated you to apply to Dankook University? Explain why you are applying to the particular school of study (department) and what is your plan of study and self-development after admission, your career goal after graduation.



기숙사 입사 신청서

Dormitory Application Form (宿舍申请表)

| | | | |
|---|--|-----------------------------|---|
| 캠퍼스 校区 Campus | 죽전 竹田 Jukjeon <input type="checkbox"/> 천안 天安 Cheonan <input type="checkbox"/> | 입학구분 入学区分 Admission Type | 신입 新生 Freshman <input type="checkbox"/> 편입 插班生 Transfer <input type="checkbox"/> |
| 성명(영문) 姓名(英文) Passport Name | 여권이름 护照姓名 | 성별 性别 Gender | 남 男 Male <input type="checkbox"/> 여 女 Female <input type="checkbox"/> |
| 수험번호 考号 Application No | | 국적 国籍 Nationality | |
| 지원학과 填报专业 Major | | TOPIK성적 成绩 TOPIK Score | 있음 有 <input type="checkbox"/> 급 級 Acquired Level 없음 无 <input type="checkbox"/> none |
| 연락처 手机号码 Telephone No | | | |
| 외국인등록증번호 外国人登陆证号码 Alien Registration No | 한국에서 비자 변경할시 在韩国换签证 | | |

| | | |
|--|--|-------------------------------------|
| 생활관 입사 신청 여부(V 표시) 学期宿舍申请与否 (请打 V) Dormitory Application | 신청 申请 Yes <input type="checkbox"/> | 미신청 不申请 No <input type="checkbox"/> |
| 생활관 거주 기간(V 표시) 学期宿舍居住期间 (请打 V) Housing Period | 학기 1 semester <input type="checkbox"/> | 반기 6 month <input type="checkbox"/> |
| *상기 본인은 생활관 입사신청서를 제출합니다* | | |

생활관 입사 신청서를 제출하지 않는 경우, 생활관 미배정

如没有提交宿舍申请表, 则视为放弃申请, 即无法入住宿舍

Applicants should submit this form, otherwise they will not be assigned to the Dormitory

* 신편입생의 경우 첫 학기 생활관비는 국제화장학금으로 지원

(단, 글로벌경영학과, 모바일시스템공학과 및 TOPIK 1급, 2급 소지자 제외)

* 新入插班生入学时, 第一学期宿舍费由国际化奖学金支付 (国际经营学系, 移动通信系统工程学系以及TOPIK1级, 2级持有者除外)

* For new students, the dormitory fee for the first semester is supported by the International Scholarship

(However, students from the Global Business Administration major, Mobile Systems Engineering major, and TOPIK Level 1 or Level 2 holders are excluded)

서명 | Signature (签名) _____

학교 정보 확인서 学校信息确认书

| | | | | |
|----------------------------|------------------------------------|---|----------------|--|
| 유학생 인적사항 留学生 个人信息 | 성명 姓名 | | 생년월일 出生日期 | |
| | 국적 国籍 | | 여권번호 护照号码 | |
| | 진학 예정 대학 拟入学大学名称 | | 전공명 专业名称 | |
| | 전화번호 联系电话 | | e-mail 电子邮箱 | |
| 학교정보 学校信息 | 졸업학교명 (졸업일) 毕业学校名称 (毕业日期) | (졸업일 毕业日期: 20 . . .) | | |
| | 학교유형 学校类型 | 보통중등전문학교 普通中专() 직업고등학교 职业高中() 성인중등전문학교 成人中专() 기타 其他() | | |
| | 교육과정 教育种类 | 고등학교 학력과정 高中阶段学历教育() 고등학교 비학력과정 高中阶段非学历教育() ※ 비학력 과정의 경우 유학비자 발급 불가 非学历教育学生不能获得韩国留学签证 | | |
| | 소재지 学校地址 | | | |
| | 전화번호 学校电话 | | | |
| 교직원 연락정보 教职工 联系信息 | 소속 및 직위 所属部门及职位 | | | |
| | 성명 姓名 | (인 또는 서명) (盖章或签名) | 전화번호 联系电话 | |

본인은 상기 학교 정보 등 기재 내용이 사실과 다름없음을 서약하며, 허위 사실 기재 시 대한민국 법령에 따라 처벌받을 수 있음을 확인합니다.
本人保证, 以上所填写的学校信息等内容均属实。本人理解, 以上信息如有虚假, 可能会受到韩国相关法律法规的处罚。特此确认。

20 . . .
유학생 본인 留学生本人 (서명 签名)

* 2부 작성 후 교육기관 및 재외공관에 각각 제출
本确认书需要一式两份。一份交拟入学大学, 一份交韩国驻外使领馆。



JUKJEON CAMPUS

317 International Hall, 152 Jukjeon-ro, Suji-gu, Yongin-si, Gyeonggi-do, 16890, Korea

CHEONAN CAMPUS

234 Humanities Hall, 119 Dandae-ro, Dongnam-gu, Cheonan-si, Chungnam, 31116, Korea

<http://www.dankook.ac.kr>

